

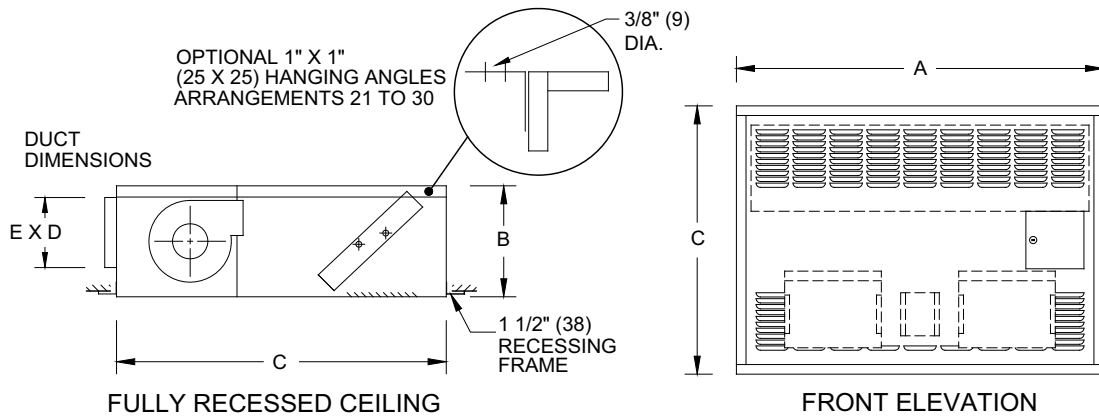
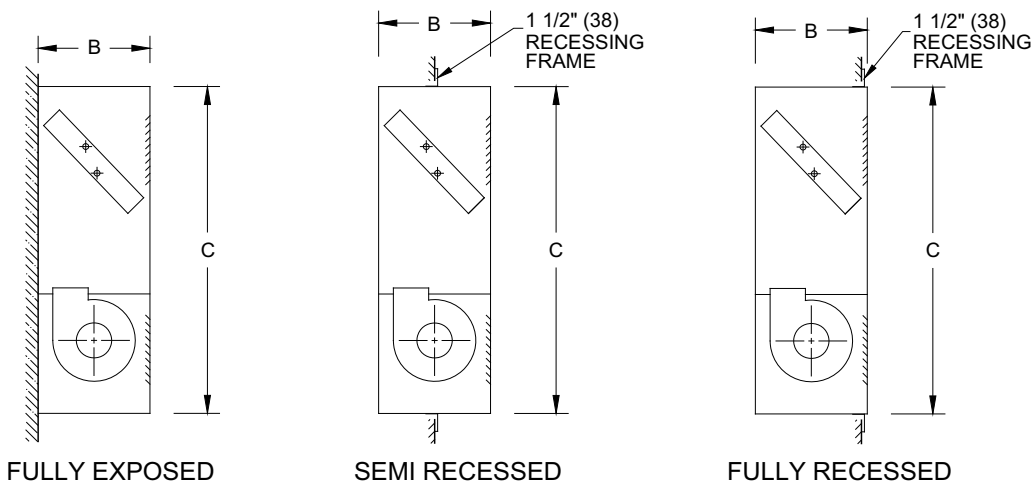
CUH Series ***Cabinet Unit Heaters***



AIRTEX™
HYDRONIC SYSTEMS

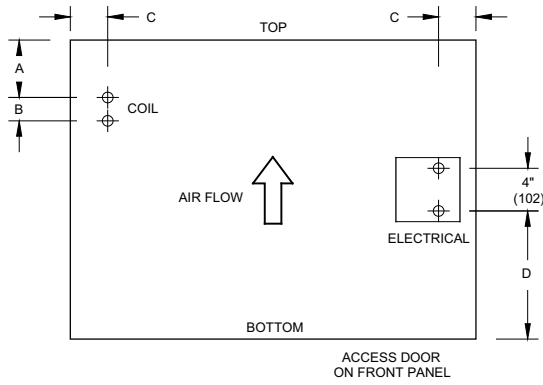
HEAT TRANSFER DIVISION

TYPICAL ARRANGEMENTS

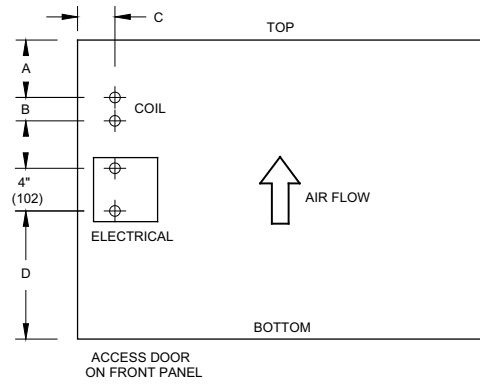


GENERAL INFORMATION, DIMENSIONS AND WEIGHTS

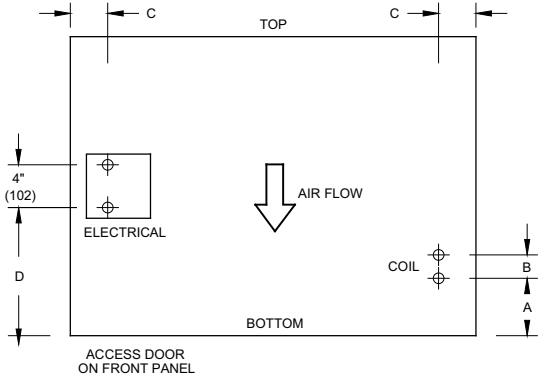
MODEL	NOMINAL CFM/L/s	MOTOR HP/WATTS	MOTOR RPM	MOTOR AMPS	# OF FANS	A in/mm	B in/mm	C in/mm	D in/mm	E in/mm	G in/mm	WEIGHT LBS./KG.
CUH-1	185	1/25	1050	0.6	1	26	9 1/2	28	18	6	1/2	75
	87	30				660	241					
CUH-2	245	1/25	1050	0.6	1	26	9 1/2	28	18	6	1/2	75
	116	30				660	241					
CUH-3	300	1/25	1050	0.6	1	26	9 1/2	28	18	6	1/2	75
	142	30				660	241					
CUH-4	370	1/20	1075	1.2	2	38	9 1/2	28	30	6	7/8	110
	175	37				965	241					
CUH-5	485	1/20	1075	1.2	2	38	9 1/2	28	30	6	7/8	110
	229	37				965	241					
CUH-6	600	1/20	1075	1.2	2	38	9 1/2	28	30	6	7/8	110
	283	37				965	241					
CUH-7	620	1/10	1075	1.7	2	40	11 3/4	32	32	7 1/2	7/8	130
	293	75				1016	298					
CUH-8	810	1/10	1075	1.7	2	40	11 3/4	32	32	7 1/2	7/8	130
	382	75				1016	298					
CUH-9	950	1/10	1075	1.7	2	40	11 3/4	32	32	7 1/2	7/8	130
	448	75				1016	298					
CUH-10	1000	1/4	1075	4.8	2	54	13 1/4	36	46	7 1/2	7/8	190
	472	187				1372	337					
CUH-11	1300	1/4	1075	4.8	2	54	13 1/4	36	46	7 1/2	7/8	190
	614	187				1372	337					
CUH-12	1500	1/4	1075	4.8	2	54	13 1/4	36	46	7 1/2	7/8	190
	708	187				1372	337					



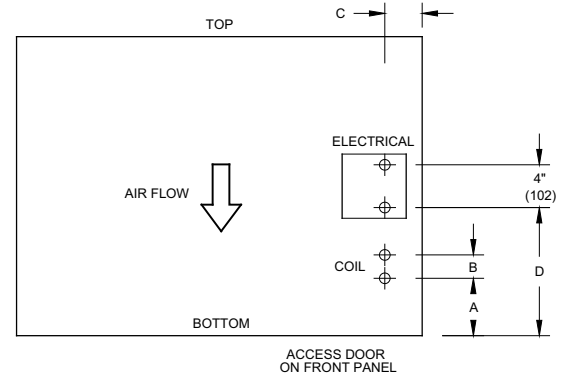
VERTICAL ARRANGEMENTS
1 2 4 5 6 7 14 16 19



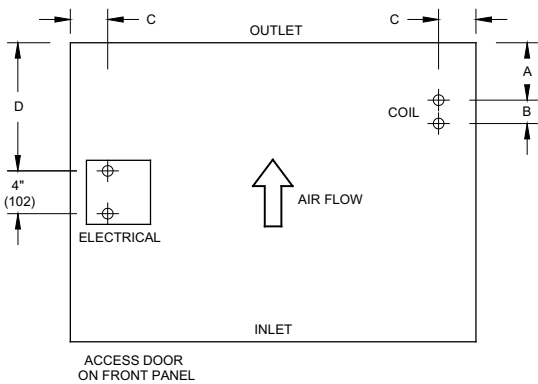
VERTICAL ARRANGEMENTS
3 15



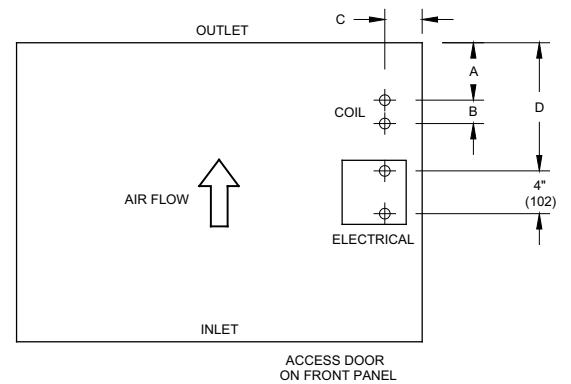
VERTICAL ARRANGEMENTS
8 9 11 12 13 18 20



VERTICAL ARRANGEMENTS
10 17



HORIZONTAL ARRANGEMENTS
21 22 23 24 25 26 27 29

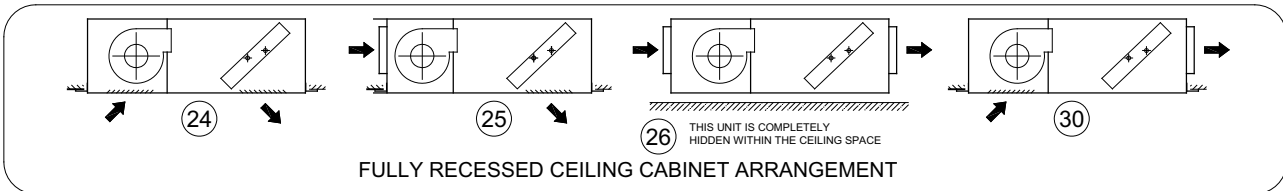
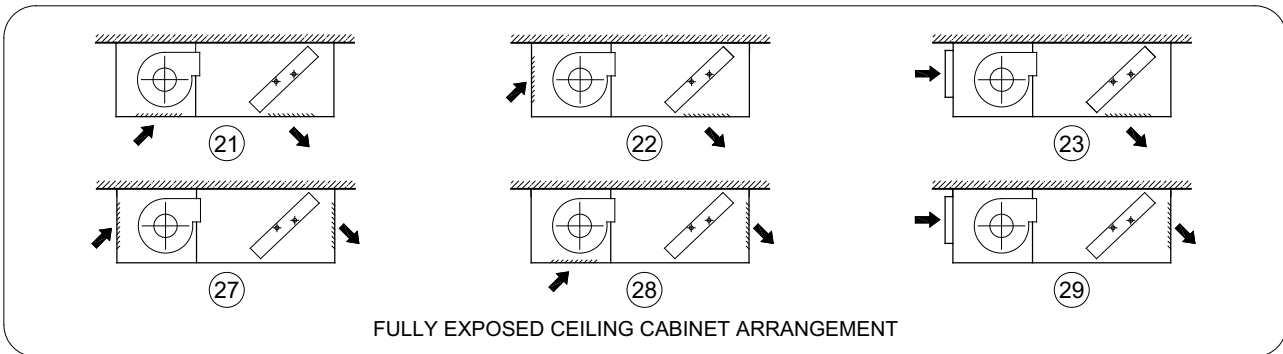
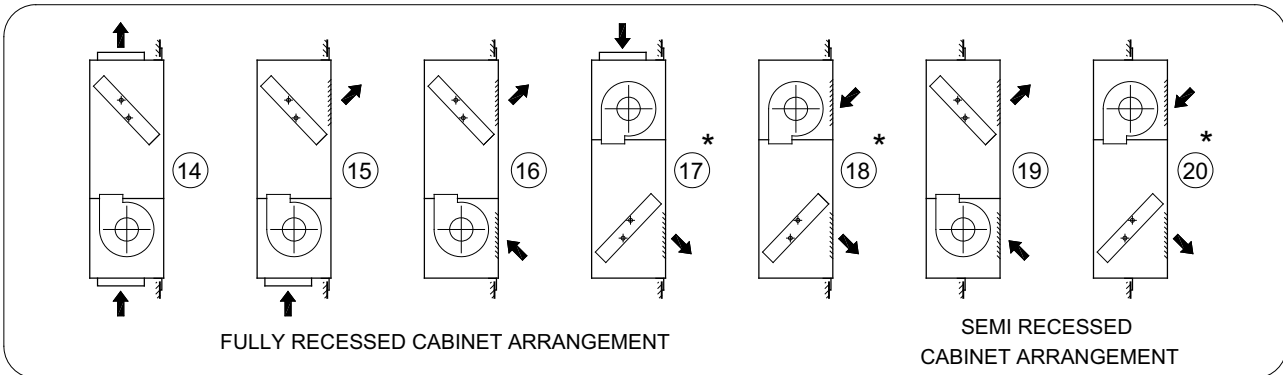
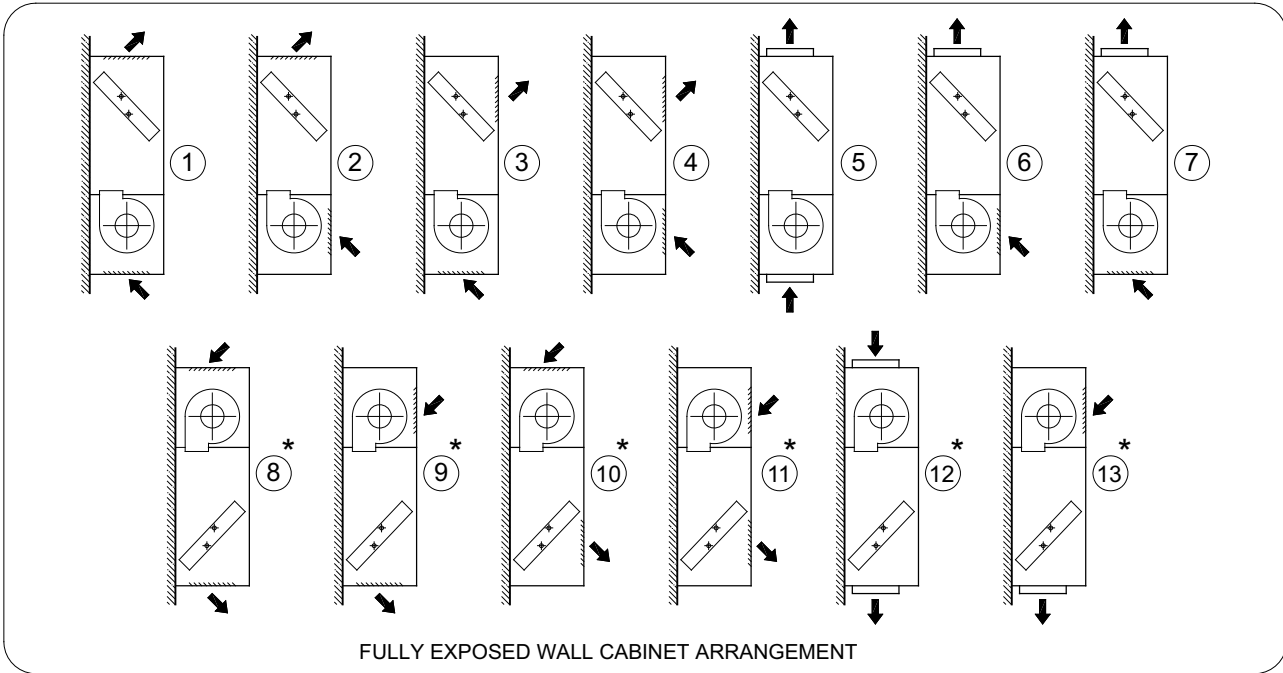


HORIZONTAL ARRANGEMENTS
28 30

MODEL	A in/mm	B in/mm	C in/mm	D in/mm
CUH-1, 2, 3	5 3/8 137	2 3/16 56	3 1/2 89	12 305
CUH-4, 5, 6	5 3/8 137	2 3/16 56	3 1/2 89	12 305

MODEL	A in/mm	B in/mm	C in/mm	D in/mm
CUH-7, 8, 9	5 3/4 146	2 13/16 56	3 1/2 89	14 356
CUH-10, 11, 12	6 13/16 173	2 56	2 1/2 64	16 406

NOTES: Drawings represent view of back panel when looking at front of unit.
Knockouts are dual type, 7/8" (22mm) and 1 1/8" (29mm) ø.



NOTES: The arrangements shown represent standard configuration. If special arrangements and/or dimensions are required, contact your local Engineered Air representative.

* Recommended for use only with hot water coil control sequence or continuous fan operation.

MODEL NO.	CFM	WATER TD °F	200°F E.W.T.			180°F E.W.T.			160°F E.W.T.			2 PSIG STEAM		
			CAP. (MBH)	FLOW (GPM)	P.D. (FT.)	CAP. (MBH)	FLOW (GPM)	P.D. (FT.)	CAP. (MBH)	FLOW (GPM)	P.D. (FT.)	CAP. (MBH)	FLOW (LBS/HR)	
IMPERIAL CUH-1	185	20	19.13	1.95	2.86	16.10	1.62	2.13	13.07	1.31	1.52	20.8	21.6	
		30	18.12	1.22	1.26	15.23	1.02	0.94	12.29	0.81	0.65			
		40	17.40	0.87	0.69	14.40	0.71	0.49	11.59	0.59	0.37			
	CUH-2	245	20	22.22	2.26	3.73	18.67	1.89	2.79	15.16	1.52	1.97	26.0	27.0
			30	21.09	1.42	1.63	17.79	1.20	1.25	14.11	0.93	0.83		
	CUH-3	300	20	25.55	2.61	4.83	21.45	2.17	3.57	17.49	1.76	2.55	29.8	30.9
30			24.30	1.64	2.12	20.32	1.36	1.56	16.23	1.08	1.08			
CUH-4	370	20	36.33	3.69	1.94	30.50	3.07	1.44	24.75	2.48	1.02	40.8	42.3	
		30	34.42	2.30	0.84	28.88	1.92	0.63	23.05	1.50	0.42			
CUH-5	485	20	42.61	4.34	2.59	35.74	3.60	1.91	29.07	2.92	1.37	50.3	52.2	
		30	40.44	2.71	1.13	33.92	2.27	0.85	26.90	1.77	0.57			
CUH-6	600	20	49.27	5.02	3.36	41.32	4.19	2.51	33.69	3.39	1.79	59.6	61.8	
		30	46.80	3.16	1.48	39.05	2.63	1.10	31.06	2.07	0.75			
CUH-7	620	20	55.90	5.70	5.60	47.06	4.78	4.22	38.29	3.87	3.01	65.7	68.1	
		30	53.32	3.60	2.49	44.86	3.01	1.87	35.99	2.39	1.29			
CUH-8	810	20	67.34	6.88	7.81	56.44	5.72	5.82	46.21	4.66	4.20	80.5	83.4	
		30	64.25	4.37	3.51	53.66	3.60	2.57	42.93	2.86	1.78			
CUH-9	950	20	73.86	7.55	9.21	62.05	6.31	6.92	50.89	5.13	4.99	88.3	91.5	
		30	70.91	4.81	4.17	58.86	3.95	3.04	47.10	3.16	2.12			
CUH-10	1000	20	90.03	9.15	4.24	75.63	7.67	3.12	61.42	6.14	2.12	105.9	109.8	
		30	85.53	5.78	1.82	72.04	4.84	1.34	57.19	3.78	0.87			
CUH-11	1300	20	107.6	10.98	5.94	90.52	9.15	4.32	73.81	7.44	3.03	129.2	133.9	
		30	102.6	6.96	2.57	85.53	5.72	1.83	68.43	4.54	1.23			
CUH-12	1500	20	117.3	11.98	6.98	98.68	10.03	5.12	80.69	8.14	3.58	142.6	147.8	
		30	112.2	7.61	3.03	93.10	6.26	2.15	74.48	4.96	1.44			
		40	105.5	5.31	1.56	86.32	4.31	1.09	67.05	3.31	0.69			

NOTES: All data for 60°F EAT.
For alternate operating conditions refer to page 51.

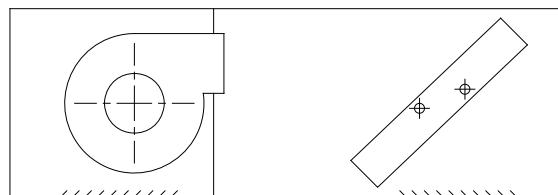
MODEL NO.	L/s	WATER TD °C	93°C E.W.T.			82°C E.W.T.			71°C E.W.T.			13 kPa STEAM	
			CAP.	FLOW	P.D.	CAP.	FLOW	P.D.	CAP.	FLOW	P.D.	CAP.	FLOW
			(kW)	(L/s)	(kPa)	(kW)	(L/s)	(kPa)	(kW)	(L/s)	(kPa)	(kW)	(KG/HR)
CUH-1	87	11	5.6	0.12	8.54	4.7	0.10	6.35	3.8	0.08	4.53	6.0	9.8
		16	5.3	0.07	3.76	4.4	0.06	2.79	3.5	0.05	1.94		
		22	5.0	0.05	2.05	4.2	0.04	1.47	3.3	0.03	1.11		
CUH-2	115	11	6.5	0.14	11.12	5.4	0.11	8.32	4.4	0.09	5.87	7.6	12.2
		16	6.1	0.08	4.87	5.2	0.07	3.71	4.1	0.05	2.47		
		22	5.8	0.06	2.65	4.8	0.05	1.94	3.8	0.04	1.26		
CUH-3	141	11	7.4	0.16	14.42	6.2	0.13	10.65	5.1	0.11	7.60	8.7	14.0
		16	7.1	0.10	6.31	5.9	0.08	4.66	4.7	0.06	3.21		
		22	6.7	0.07	3.46	5.5	0.05	2.46	4.3	0.04	1.59		
CUH-4	174	11	10.6	0.23	5.80	8.9	0.19	4.30	7.3	0.16	3.05	11.9	19.2
		16	10.1	0.15	2.51	8.5	0.12	1.88	6.8	0.09	1.26		
		22	9.6	0.10	1.35	7.9	0.08	0.99	6.5	0.07	0.84		
CUH-5	228	11	12.5	0.27	7.74	10.5	0.23	5.71	8.5	0.18	4.10	14.7	23.6
		16	11.8	0.17	3.38	9.9	0.14	2.54	7.9	0.11	1.70		
		22	11.2	0.12	1.82	9.2	0.10	1.32	7.2	0.08	0.87		
CUH-6	283	11	14.4	0.32	10.04	12.1	0.26	7.50	9.9	0.21	5.35	17.4	28.0
		16	13.7	0.20	4.42	11.4	0.17	3.29	9.1	0.13	2.24		
		22	12.9	0.14	2.36	10.6	0.11	1.70	8.3	0.09	1.11		
CUH-7	292	11	16.3	0.35	16.71	13.7	0.30	12.58	11.2	0.24	8.96	19.2	30.9
		16	15.6	0.22	7.42	13.1	0.18	5.56	10.5	0.15	3.84		
		22	14.9	0.16	4.08	12.3	0.13	2.94	9.6	0.10	1.94		
CUH-8	382	11	19.7	0.43	23.29	16.5	0.36	17.35	13.5	0.29	12.52	23.5	37.8
		16	18.8	0.27	10.47	15.7	0.22	7.66	12.5	0.18	5.30		
		22	17.8	0.19	5.62	14.7	0.15	4.06	11.5	0.12	2.69		
CUH-9	448	11	21.6	0.47	27.49	18.1	0.39	20.63	14.9	0.32	14.87	25.8	41.5
		16	20.7	0.30	12.44	17.2	0.24	9.06	13.8	0.19	6.31		
		22	19.5	0.21	6.72	16.0	0.17	4.77	12.5	0.13	3.14		
CUH-10	472	11	26.3	0.57	12.63	22.1	0.48	9.30	17.9	0.38	6.33	31.0	49.8
		16	25.0	0.36	5.43	21.1	0.30	4.00	16.7	0.23	2.60		
		22	23.8	0.25	2.85	19.5	0.20	1.99	15.4	0.16	1.32		
CUH-11	613	11	31.5	0.69	17.71	26.5	0.57	12.88	21.6	0.46	9.03	37.8	60.7
		16	30.0	0.43	7.66	25.0	0.36	5.45	20.0	0.28	3.66		
		22	28.4	0.30	4.01	23.2	0.24	2.77	18.2	0.19	1.79		
CUH-12	708	11	34.3	0.75	20.83	28.9	0.63	15.28	23.6	0.51	10.68	41.7	67.1
		16	32.8	0.48	9.03	27.2	0.39	6.42	21.8	0.31	4.30		
		22	30.9	0.33	4.66	25.2	0.27	3.25	19.6	0.20	2.05		

METRIC

NOTES: All data for 16°C EAT.
For alternate operating conditions refer to page 51.

STEAM PRESSURE PSI (kPa)	ENTERING AIR TEMPERATURE °F (°C)							
	30 (-1)	40 (4)	50 (10)	60 (15)	70 (21)	80 (26)	90 (32)	100 (37)
0 (0)	1.19	1.11	1.03	0.96	0.88	0.81	0.74	0.67
2 (14)	1.24	1.16	1.08	1.00	0.93	0.85	0.78	0.71
5 (34)	1.29	1.21	1.13	1.05	0.97	0.90	0.83	0.76
10 (69)	1.38	1.29	1.21	1.13	1.06	0.98	0.91	0.84
15 (103)	1.44	1.34	1.28	1.19	1.12	1.04	0.97	0.90
20 (138)	1.50	1.42	1.33	1.25	1.17	1.10	1.02	0.95
50 (345)	1.76	1.67	1.58	1.50	1.42	1.34	1.26	1.19
75 (518)	1.90	1.81	1.72	1.64	1.55	1.47	1.39	1.32
100 (690)	2.02	1.93	1.84	1.75	1.66	1.58	1.50	1.42

ENTERING WATER TEMP. °F (°C)	ENTERING AIR TEMPERATURE °F (°C)							
	30 (-1)	40 (4)	50 (10)	60 (15)	70 (21)	80 (26)	90 (32)	100 (37)
100 (38)	0.49	0.43	0.36	0.29	0.21	0.14	0.07	0.00
120 (49)	0.66	0.58	0.51	0.43	0.35	0.28	0.21	0.14
140 (60)	0.81	0.73	0.65	0.57	0.49	0.42	0.35	0.27
160 (71)	0.96	0.88	0.80	0.72	0.64	0.56	0.48	0.41
180 (82)	1.11	1.03	0.94	0.86	0.78	0.70	0.62	0.55
200 (93)	1.26	1.17	1.09	1.00	0.92	0.84	0.76	0.68
220 (104)	1.41	1.32	1.23	1.14	1.06	0.89	0.90	0.82
240 (116)	1.56	1.46	1.38	1.29	1.20	1.12	1.04	0.96



NOTES: Apply to 2 PSIG (13.8 KPa) steam or 200°F (93°C) EWT and 60°F (16°) EAT.

AIRFLOW AND CAPACITY VS. EXTERNAL STATIC PRESSURES

MODEL No.	NOMINAL CFM	0.05" WC		0.10" WC		0.15" WC		0.20" WC		0.25" WC	
		CFM	MBH	CFM	MBH	CFM	MBH	CFM	MBH	CFM	MBH
CUH-1	185	0.89	0.98	0.46	0.7	—	—	—	—	—	—
CUH-2	245	1.01	1.03	0.86	0.94	0.63	0.78	—	—	—	—
CUH-3	300	1.07	1.07	1	1	0.9	0.92	0.64	0.69	—	—
CUH-4	370	0.77	0.91	0.28	0.56	—	—	—	—	—	—
CUH-5	485	0.96	0.99	0.79	0.89	0.45	0.64	—	—	—	—
CUH-6	600	1.03	1.03	0.97	0.97	0.83	0.85	0.62	0.67	—	—
CUH-7	620	0.81	0.91	0.51	0.73	—	—	—	—	—	—
CUH-8	810	0.91	0.96	0.78	0.89	0.63	0.75	0.4	0.6	—	—
CUH-9	950	0.97	0.99	0.98	0.94	0.82	0.84	0.74	0.79	0.63	0.68
CUH-10	1000	0.74	0.9	0.56	0.79	0.47	0.72	—	—	—	—
CUH-11	1300	0.83	0.94	0.8	0.88	0.69	0.82	0.6	0.76	—	—
CUH-12	1500	0.88	0.97	0.83	0.94	0.77	0.89	0.69	0.84	0.57	0.75

IMPERIAL

MODEL No.	NOMINAL L/s	12 Pa		25 Pa		37 Pa		50 Pa		62 Pa	
		L/s	kW	L/s	kW	L/s	kW	L/s	kW	L/s	kW
CUH-1	87	0.89	0.98	0.46	0.7	—	—	—	—	—	—
CUH-2	115	1.01	1.03	0.86	0.94	0.63	0.78	—	—	—	—
CUH-3	141	1.07	1.07	1	1	0.9	0.92	0.64	0.69	—	—
CUH-4	174	0.77	0.91	0.28	0.56	—	—	—	—	—	—
CUH-5	228	0.96	0.99	0.79	0.89	0.45	0.64	—	—	—	—
CUH-6	283	1.03	1.03	0.97	0.97	0.83	0.85	0.62	0.67	—	—
CUH-7	292	0.81	0.91	0.51	0.73	—	—	—	—	—	—
CUH-8	382	0.91	0.96	0.78	0.89	0.63	0.75	0.4	0.6	—	—
CUH-9	448	0.97	0.99	0.98	0.94	0.82	0.84	0.74	0.79	0.63	0.68
CUH-10	472	0.74	0.9	0.56	0.79	0.47	0.72	—	—	—	—
CUH-11	613	0.83	0.94	0.8	0.88	0.69	0.82	0.6	0.76	—	—
CUH-12	708	0.88	0.97	0.83	0.94	0.77	0.89	0.69	0.84	0.57	0.75

METRIC

CABINET UNIT HEATERS

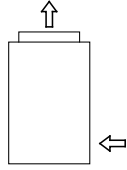
1. Casings shall be constructed of 16 gauge (1.5mm) satin coat steel throughout with electrostatically applied powder coat prime finish. Casing shall incorporate an integral piping pocket, removable front panel, and hinged access door to electrical junction box. Recessed units shall be furnished with a recessing frame.
2. Coils shall be 1/2" (13mm) copper tube with rippled aluminum fins and sweat connections. Coils to be factory tested with air at 300 psig (2070 kPa).
3. Fans shall be double width, double inlet, forward curved centrifugal type, balanced for quiet vibration free operation.
4. Motors shall be 3-speed permanent split capacitor, open type, resiliently mounted, incorporating sleeve bearings and internal automatic re-set overload protection.
5. Units must be CSA approved and bear the CSA label.
6. Provide factory installed options:
 - _____ 3-speed plus off fan switch
 - _____ modulating speed control
 - _____ cleanable wire frame filter
 - _____ internal insulation
 - _____ fused starter with toggle switch
 - _____ line voltage thermostat
 - _____ key lock access door
7. Wall mounted thermostat and/or switches, where required, to be provided by others.
8. Optional high static 3-speed permanent split capacitor motors: 1/6 HP (0.124kW) 3.7 amps 1550 RPM CUH-1 through CUH-6; 1/4 HP (0.187 kW) 3.3 amps 1625 RPM CUH-7 through CUH-9; 1/2 HP (0.373 kW) 9.4 amps 1625 RPM CUH-10 through CUH-12.
9. Units shall be Airtex Hydronic Systems, model numbers and sizes as indicated on drawings and/or schedule.

CABINET UNIT HEATER SCHEDULE (BASED ON AIRTEX HYDRONIC SYSTEMS)					
TYPE ON PLAN	MODEL	ARRANGEMENT	MBH (kW)	HP (WATTS)	REMARKS

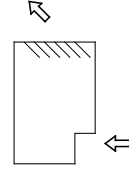
**DIRECT DRIVE
FAN COIL UNITS
(BLOW THROUGH)**

FAN COIL UNITS ARE AVAILABLE IN EXPOSED, SEMI-RECESSED, RECESSED AND CONCEALED ARRANGEMENTS. CERTIFIED DIMENSIONAL DRAWINGS ARE AVAILABLE UPON REQUEST.

LOBOY LFC SERIES

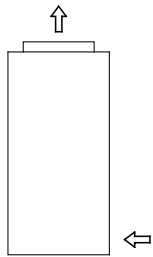


ARRANGEMENT 63

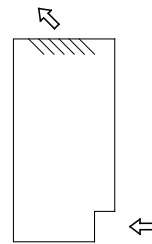


ARRANGEMENT 64

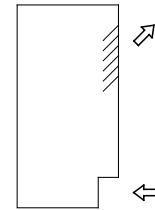
VERTICAL VFC SERIES



ARRANGEMENT 43



ARRANGEMENT 44



ARRANGEMENT 45

HORIZONTAL HFC SERIES



ARRANGEMENT 11



ARRANGEMENT 21



ARRANGEMENT 31 ↗



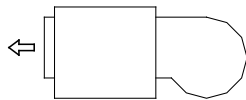
ARRANGEMENT 12



ARRANGEMENT 22



ARRANGEMENT 32 ↗



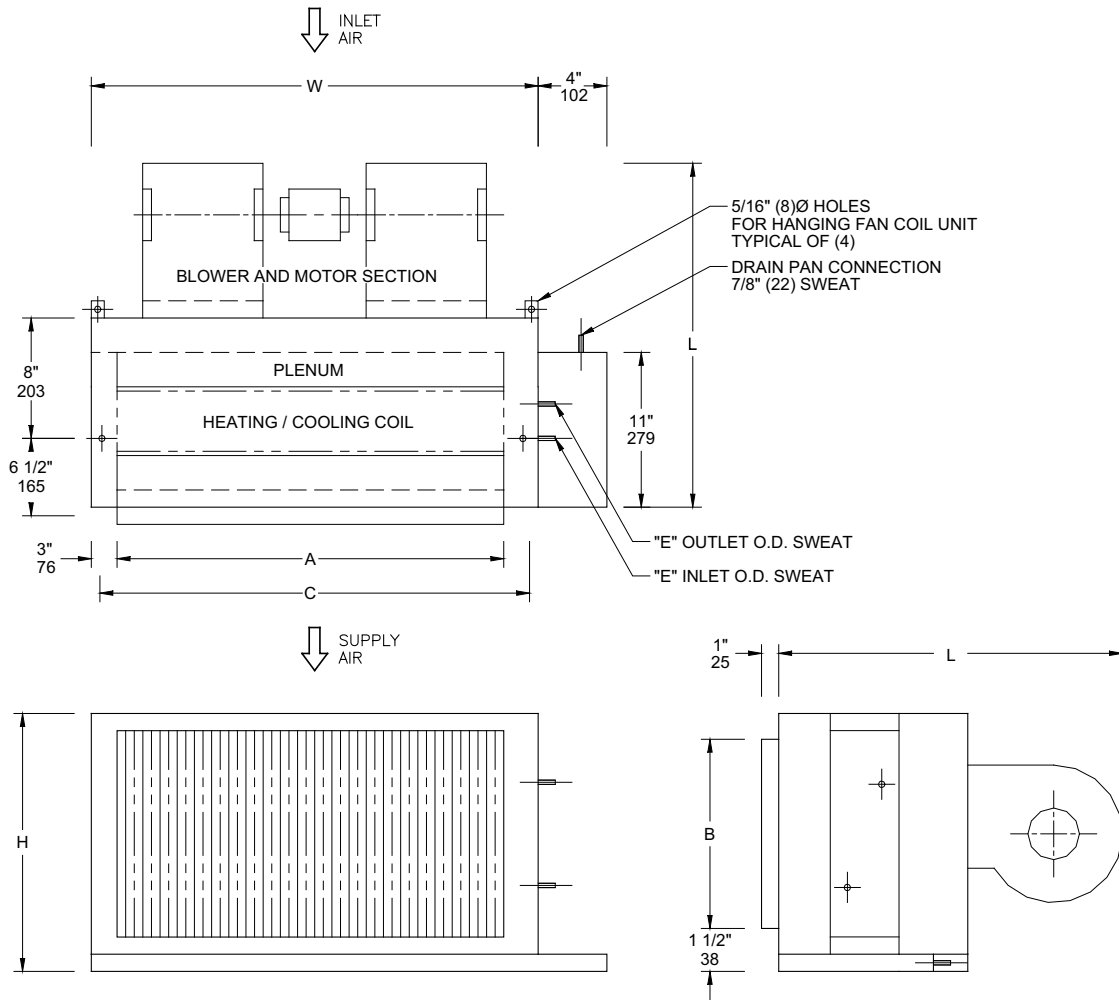
ARRANGEMENT 51

OPTIONS:

- CUSTOM SIZES, ARRANGEMENTS AND PERFORMANCE RATINGS.
- RECESSING FLANGES AND LEVELING BOLTS.
- SPECIAL MATERIALS FOR CASINGS, DRAIN PANS, COILS AND FANS.
- HIGH STATIC PRESSURE MODELS.
- EXTRA HEAVY 16 GA (1.5mm) CONSTRUCTION. (STANDARD ON EXPOSED UNITS).
- HIGH DENSITY ACOUSTICAL INSULATION, 3 lb/ft³ (48 kg/m³) WITH NEOPRENE COATING.
- THROW AWAY, PERMANENT WASHABLE OR REPLACEABLE MEDIA FILTERS.
- SPECIAL MOTORS: TOTALLY ENCLOSED, SPECIAL VOLTAGES.
- AUXILIARY HOT WATER, STEAM OR ELECTRIC HEATING COILS.
- EXTRA HIGH CAPACITY COOLING COILS.
- UNIT OR REMOTE MOUNTED, VARIABLE OR 3 SPEED CONTROLLERS, THERMOSTATS AND STARTERS.
- VALVE CONTROL PACKAGES.
- ULTRA QUIET DESIGN.

STANDARD FEATURES:

- HEAVY 18 GA. (1.2mm) SATIN COAT STEEL CONSTRUCTION.
- CABINET WITH FULL 1" (25mm) NEOPRENE COATED INSULATION.
- EXTENDED STAINLESS STEEL CONDENSATE DRAIN PAN WITH 7/8" (22mm) COPPER FITTING.
- HIGH PERFORMANCE 2 ROW COOLING / HEATING COIL WITH MANUAL AIR VENT.
- DUCT COLLAR ON OUTLET.
- FULL BOTTOM ACCESS TO ALL COMPONENTS.
- RESILIENT MOUNTED 3 SPEED PSC MOTORS 1050 RPM FOR QUIET OPERATION AND EFFICIENCY.
- SEVEN SIZES FROM 200 TO 1800 NOMINAL CFM (94 TO 850 l/s).



GENERAL INFORMATION, DIMENSIONS AND WEIGHTS										STANDARD STATIC MOTORS		HIGH STATIC MOTORS		
MODEL	NOMINAL CFM/L/S	NO. OF FANS	L	W	H	A	B	C	E	WEIGHT LBS./KG.	MOTOR HP/WATTS	AMPS	MOTOR HP/WATTS	AMPS
HFC2	200	1	19 1/2	23	10 1/2	17	8	20	1/2	50	1/25	0.6	1/6	3.7
	94		495	584	267	432	203	508	13	22.7	30	124		
HFC3	300	1	20 1/2	28	10 1/2	22	8	25	1/2	55	1/25	0.6	1/6	3.7
	142		521	711	267	559	203	635	13	25.0	30	124		
HFC4	400	2	19 1/2	35	10 1/2	29	8	32	1/2	65	1/20	1.2	1/6	3.7
	189		495	889	267	737	203	813	13	29.5	37	124		
HFC6	600	2	20 1/2	47	10 1/2	41	8	44	1/2	80	1/20	1.2	1/6	3.7
	283		521	1194	267	1041	203	1118	13	36.3	37	124		
HFC8	800	2	20 1/2	47	13	41	10 1/2	44	7/8	89	1/10	1.7	1/4	3.3
	378		521	1194	330	1041	267	1118	22	40.4	75	186		
HFC12	1200	2	21 1/2	47	15	41	12 1/2	44	1 1/8	104	1/4	4.8	1/2	9.4
	566		546	1194	381	1041	318	1118	29	47.2	186	373		
HFC18	1800	2	23	51	17 1/2	45	15	48	1 1/8	119	1/2	9.4	(2) 1/3	11.8
	850		584	1295	446	1143	381	1219	29	54.0	373	249		

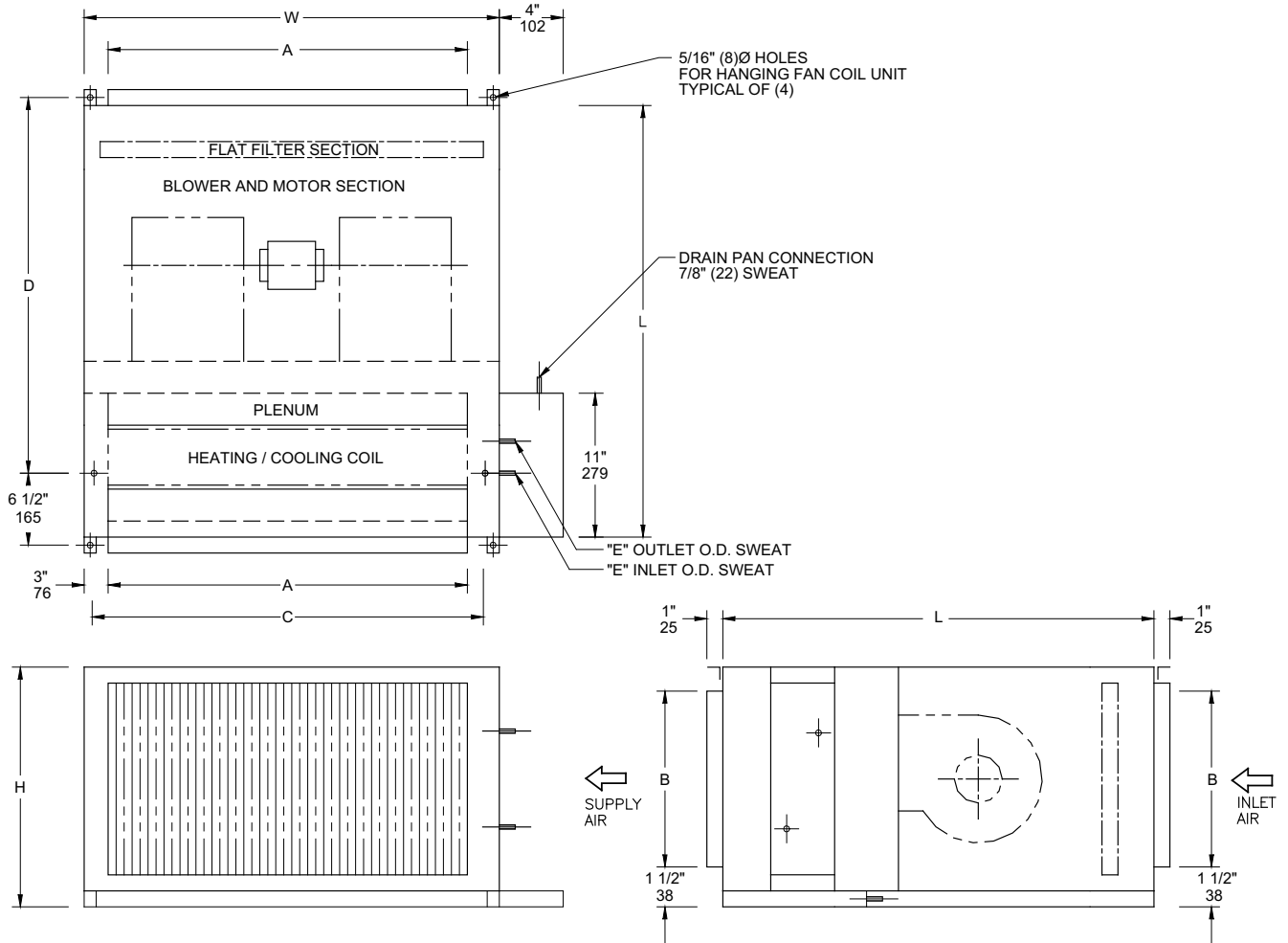
NOTES:

- UNIT SHOWN IS LEFT HAND CONFIGURATION. DIMENSIONS ARE IN INCHES AND MILLIMETERS.
- DIMENSIONS MAY CHANGE IF ADDITIONAL COIL ROWS ARE REQUIRED FOR EITHER COOLING OR HEATING APPLICATIONS.
- MAXIMUM 4 ROW COIL.

DUE TO CONTINUOUS DEVELOPMENT, DIMENSIONS AND CAPACITIES ARE SUBJECT TO CHANGE WITHOUT NOTICE.

STANDARD FEATURES:

- HEAVY 18 GA. (1.2mm) SATIN COAT STEEL CONSTRUCTION.
- CABINET WITH FULL 1" (25mm) NEOPRENE COATED INSULATION.
- EXTENDED STAINLESS STEEL CONDENSATE DRAIN PAN WITH 7/8" (22mm) COPPER FITTING.
- HIGH PERFORMANCE 2 ROW COOLING / HEATING COIL WITH MANUAL AIR VENT.
- DUCT COLLARS ON INLET AND OUTLET.
- FULL BOTTOM ACCESS TO ALL COMPONENTS.
- RESILIENT MOUNTED 3 SPEED PSC MOTORS 1050 RPM FOR QUIET OPERATION AND EFFICIENCY.
- SEVEN SIZES FROM 200 TO 1800 NOMINAL CFM (94 TO 850 l/s).



GENERAL INFORMATION, DIMENSIONS AND WEIGHTS												STANDARD STATIC MOTORS		HIGH STATIC MOTORS		
MODEL	NOMINAL CFM/L/S	NO. OF FANS	L	W	H	A	B	C	D	E	FILTERS	WEIGHT LBS./KG.	MOTOR HP/WATTS	AMPS	MOTOR HP/WATTS	AMPS
HFC2	200	1	22	23	10 1/2	17	8	20	16	1/2	10 1/4 x 19	50	1/25	0.6	1/6	3.7
	94		559	584	267	432	203	508	406	13	260 x 483	22.7	30		124	
HFC3	300	1	22	28	10 1/2	22	8	25	16	1/2	10 1/4 x 24	57	1/25	0.6	1/6	3.7
	142		559	711	267	559	203	635	406	13	260 x 610	25.9	30		124	
HFC4	400	2	22	35	10 1/2	29	8	32	16	1/2	10 1/4 x 31	74	1/20	1.2	1/6	3.7
	189		559	889	267	737	203	813	406	13	260 x 787	33.6	37		124	
HFC6	600	2	22	47	10 1/2	41	8	44	16	1/2	10 1/4 x 43	89	1/20	1.2	1/6	3.7
	283		559	1194	267	1041	203	1118	406	13	260 x 1092	40.5	37		124	
HFC8	800	2	24	47	13	41	10 1/2	44	18	7/8	12 3/4 x 43	105	1/10	1.7	1/4	3.3
	378		610	1194	330	1041	267	1118	457	22	324 x 1092	47.7	75		186	
HFC12	1200	2	25	47	15	41	12 1/2	44	19	1 1/8	14 3/4 x 43	125	1/4	4.8	1/2	9.4
	566		635	1194	381	1041	318	1118	483	29	375 x 1092	56.8	186		373	
HFC18	1800	2	26	51	17 1/2	45	15	48	20	1 1/8	17 1/4 x 47	146	1/2	9.4	(2) 1/3	11.8
	850		660	1295	446	1143	381	1219	508	29	438 x 1194	66.4	373		(2) 249	

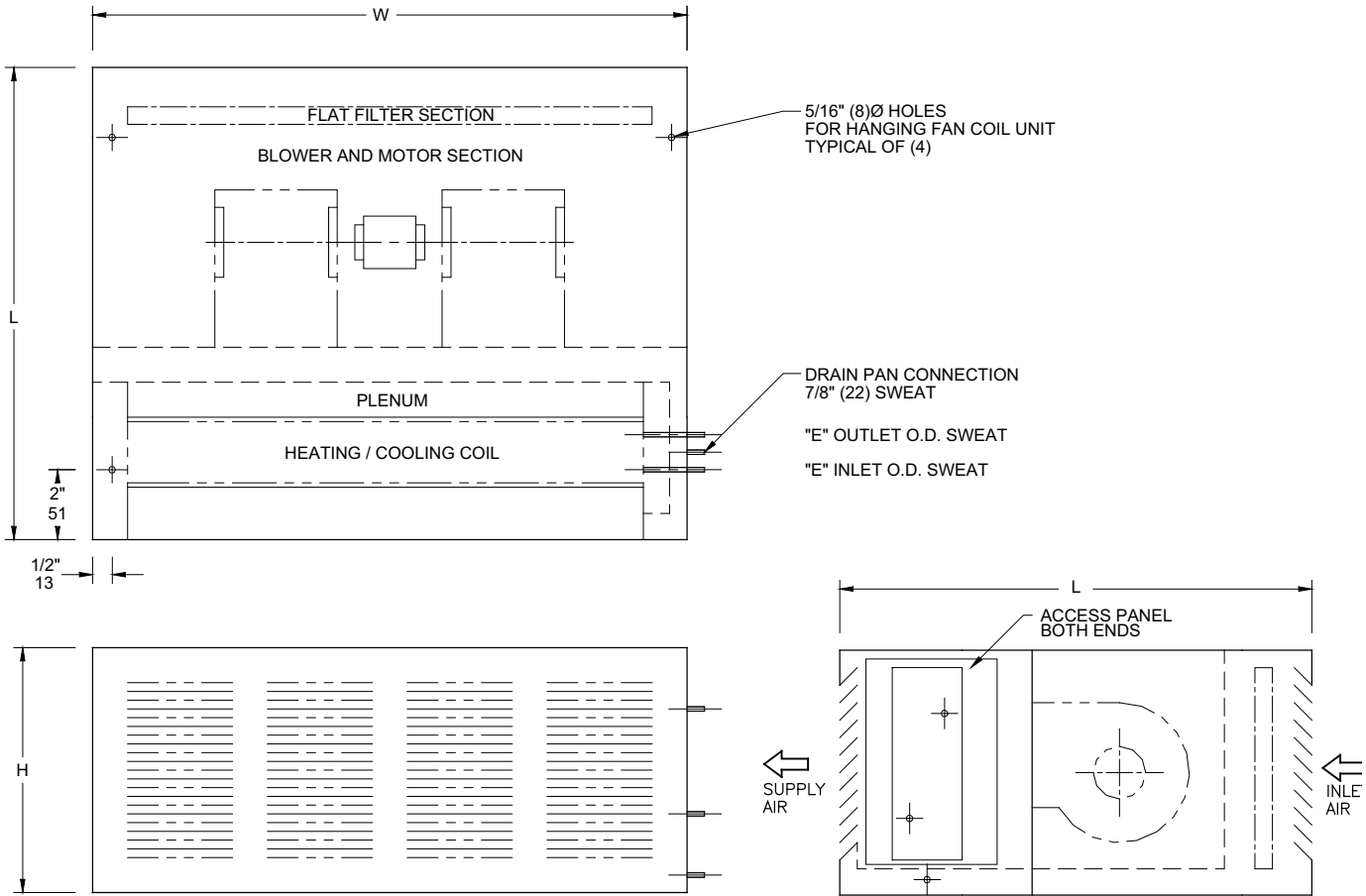
NOTES:

- UNIT SHOWN IS LEFT HAND CONFIGURATION. DIMENSIONS ARE IN INCHES AND MILLIMETERS.
- DIMENSIONS MAY CHANGE IF ADDITIONAL COIL ROWS ARE REQUIRED FOR EITHER COOLING OR HEATING APPLICATIONS.
- FILTER IS REMOVABLE FROM BOTTOM.
- MAXIMUM 4 ROW COIL.

DUE TO CONTINUOUS DEVELOPMENT, DIMENSIONS AND CAPACITIES ARE SUBJECT TO CHANGE WITHOUT NOTICE.

STANDARD FEATURES:

- HEAVY 16 GA. (1.5mm) COLD ROLLED STEEL CONSTRUCTION.
- ELECTROSTATICALLY APPLIED POWDER COAT WHITE PRIMER FINISH.
- CABINET WITH FULL 1" (25mm) NEOPRENE COATED INSULATION.
- EXTENDED STAINLESS STEEL CONDENSATE DRAIN PAN WITH 7/8" (22mm) COPPER FITTING.
- HIGH PERFORMANCE 2 ROW COOLING / HEATING COIL WITH MANUAL AIR VENT.
- LOUVRE GRILLE ON INLET AND OUTLET.
- FULL BOTTOM ACCESS TO ALL COMPONENTS.
- RESILIENT MOUNTED 3 SPEED PSC MOTORS 1050 RPM FOR QUIET OPERATION AND EFFICIENCY.
- SEVEN SIZES FROM 200 TO 1800 NOMINAL CFM (94 TO 850 l/s).



GENERAL INFORMATION, DIMENSIONS AND WEIGHTS									STANDARD STATIC MOTORS		HIGH STATIC MOTORS	
MODEL	NOMINAL CFM/L/S	NO. OF FANS	L	W	H	E	FILTERS	WEIGHT LBS./KG.	MOTOR HP/WATTS	AMPS	MOTOR HP/WATTS	AMPS
HFC2	200	1	28	29	10 1/2	1/2	10 1/4 x 19	50	1/25	0.6	1/6	3.7
	94		711	737	267	13	260 x 483	22.7	30		124	
HFC3	300	1	28	34	10 1/2	1/2	10 1/4 x 24	58	1/25	0.6	1/6	3.7
	142		711	864	267	13	260 x 635	26.4	30		124	
HFC4	400	2	28	41	10 1/2	1/2	10 1/4 x 31	75	1/20	1.2	1/6	3.7
	189		711	1041	267	13	260 x 787	34.1	37		124	
HFC6	600	2	28	53	10 1/2	1/2	10 1/4 x 43	90	1/20	1.2	1/6	3.7
	283		711	1346	267	13	260 x 1092	40.9	37		124	
HFC8	800	2	32	53	13	7/8	12 3/4 x 43	105	1/10	1.7	1/4	3.3
	378		813	1346	330	22	324 x 1092	47.7	75		186	
HFC12	1200	2	36	53	15 1/2	1 1/8	14 3/4 x 43	125	1/4	4.8	1/2	9.4
	566		914	1346	394	29	375 x 1092	56.8	186		373	
HFC18	1800	2	38	57	18 1/2	1 1/8	17 1/4 x 47	150	1/2	9.4	(2) 1/3	11.8
	850		965	1448	470	29	438 x 1194	68.2	373		(2) 249	

NOTES:

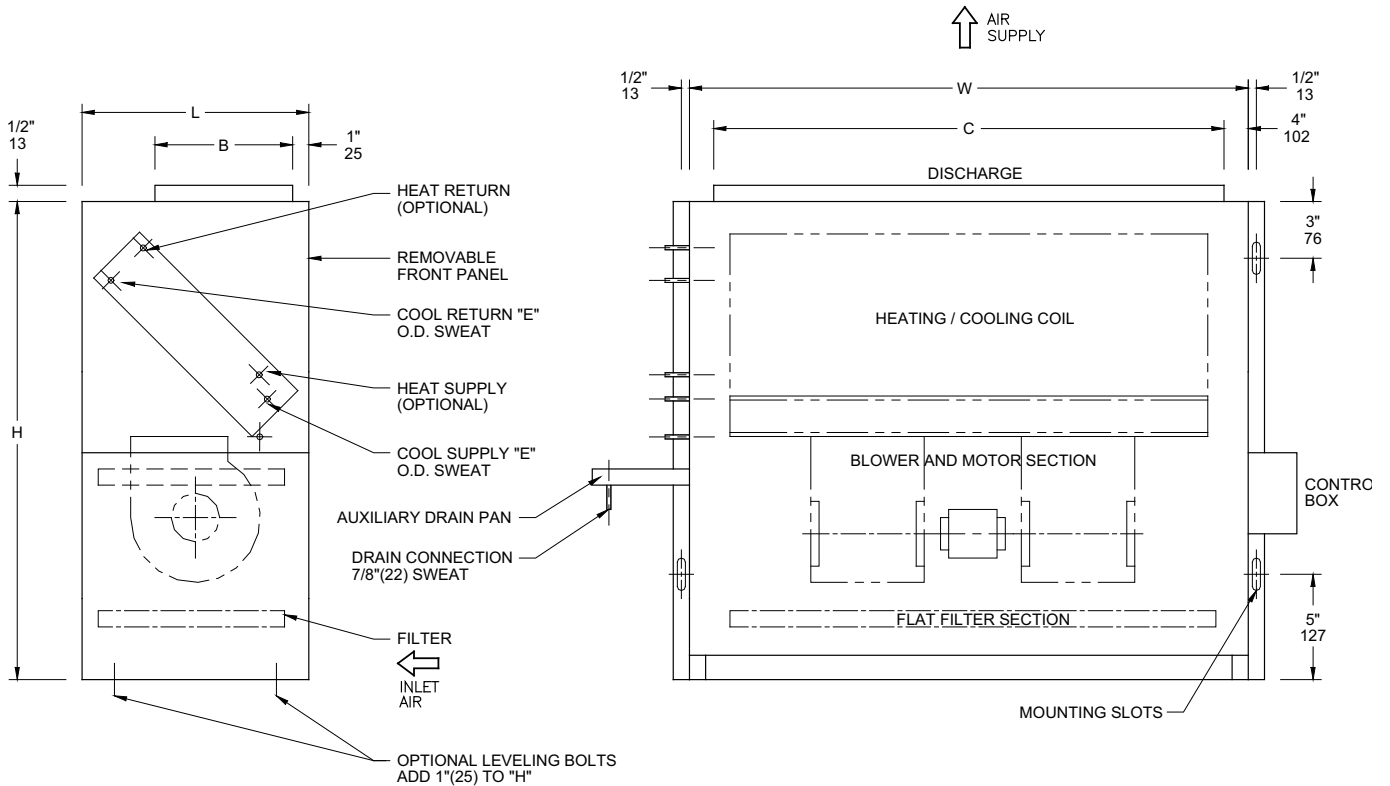
- UNIT SHOWN IS LEFT HAND CONFIGURATION. DIMENSIONS ARE IN INCHES AND MILLIMETERS.
- DIMENSIONS MAY CHANGE IF ADDITIONAL COIL ROWS ARE REQUIRED FOR EITHER COOLING OR HEATING APPLICATIONS.
- FILTER IS REMOVABLE FROM BOTTOM.
- MAXIMUM 4 ROW COIL.

DUE TO CONTINUOUS DEVELOPMENT, DIMENSIONS AND CAPACITIES ARE SUBJECT TO CHANGE WITHOUT NOTICE.

ATXH0508

STANDARD FEATURES:

- HEAVY 18 GA. (1.2mm) SATIN COAT STEEL CONSTRUCTION.
- CABINET WITH FULL 1" (25mm) NEOPRENE COATED INSULATION.
- STAINLESS STEEL CONDENSATE DRAIN PAN WITH 7/8" (22mm) COPPER FITTING.
- HIGH PERFORMANCE 2 ROW COOLING / HEATING COIL WITH MANUAL AIR VENT.
- TOE SPACE INLET WITH DUCT COLLAR ON OUTLET.
- REMOVABLE FRONT PANEL FOR ACCESS TO ALL COMPONENTS.
- RESILIENT MOUNTED 3 SPEED PSC MOTORS 1050 RPM FOR QUIET OPERATION AND EFFICIENCY.
- SEVEN SIZES FROM 200 TO 1800 NOMINAL CFM (94 TO 850 l/s).



GENERAL INFORMATION, DIMENSIONS AND WEIGHTS											STANDAR STATIC MOTORS		HIGH STATIC MOTORS	
MODEL	NOMINAL CFM/L/S	NO. OF FANS	L	W	H	B	C	E	FILTERS	WEIGHT LBS./KG.	MOTOR HP/WATTS	AMPS	MOTOR HP/WATTS	AMPS
VFC2	200 94	1	10 1/2 267	26 660	24 610	4 102	18 457	1/2 13	8 x 22 203 x 559	40 18.2	1/25 30	0.6	1/6 124	3.7
VFC3	300 142	1	10 1/2 267	31 787	24 610	4 102	23 584	1/2 13	8 x 27 203 x 686	46 20.9	1/25 30	0.6	1/6 124	3.7
VFC4	400 189	2	10 1/2 267	38 965	24 610	4 102	30 762	1/2 13	8 x 34 203 x 864	60 27.3	1/20 37	1.2	1/6 124	3.7
VFC6	600 283	2	10 1/2 267	51 1295	24 610	4 102	42 1067	1/2 13	8 x 47 203 x 1194	72 32.7	1/20 37	1.2	1/6 124	3.7
VFC8	800 378	2	13 330	51 1295	28 711	5 1/2 140	42 1067	7/8 22	9 1/2 x 47 241 x 1194	84 38.2	1/10 75	1.7	1/4 186	3.3

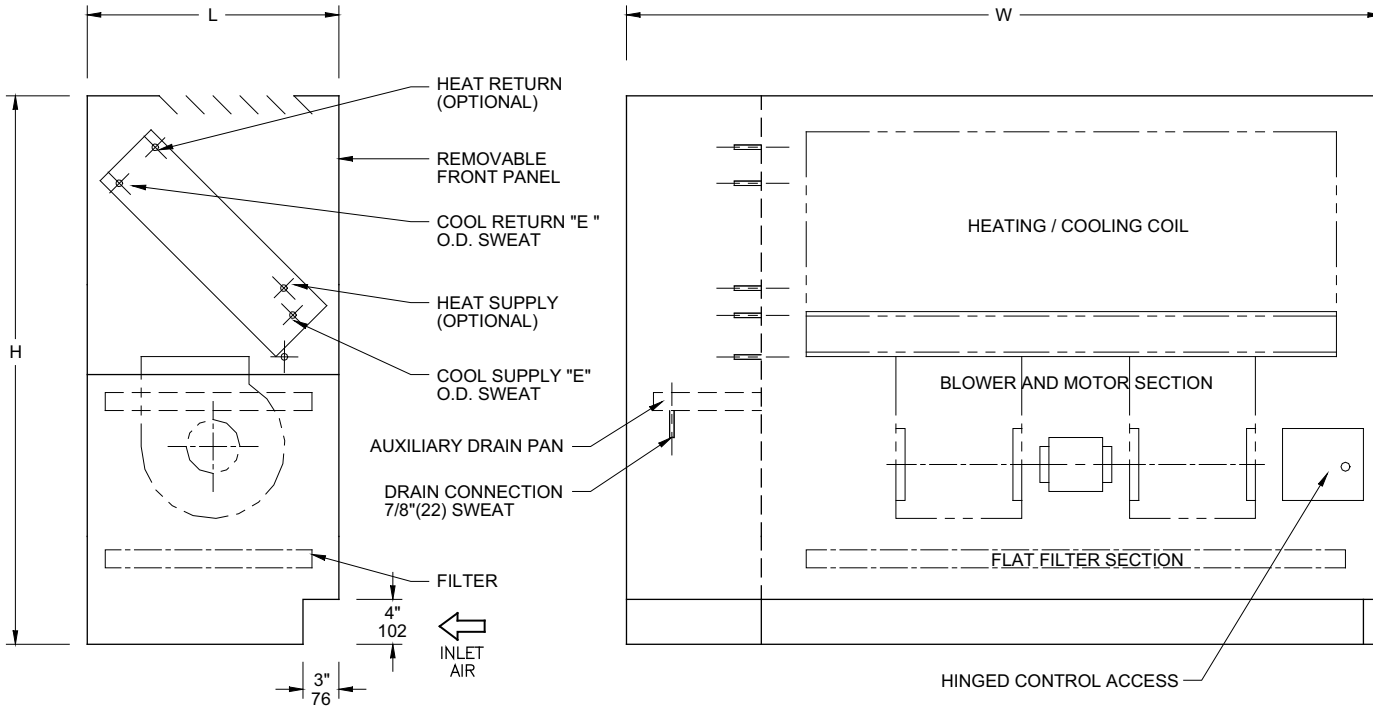
NOTES:

- UNIT SHOWN IS LEFT HAND CONFIGURATION. DIMENSIONS ARE IN INCHES AND MILLIMETERS.
- DIMENSIONS MAY CHANGE IF ADDITIONAL COIL ROWS ARE REQUIRED FOR EITHER COOLING OR HEATING APPLICATIONS.
- FILTER IS REMOVABLE FROM BOTTOM.
- MAXIMUM 4 ROW COIL.

DUE TO CONTINUOUS DEVELOPMENT, DIMENSIONS AND CAPACITIES ARE SUBJECT TO CHANGE WITHOUT NOTICE.

STANDARD FEATURES:

- HEAVY 16 GA. (1.5mm) COLD ROLLED STEEL CONSTRUCTION.
- ELECTROSTATICALLY APPLIED POWDER COAT WHITE PRIMER FINISH.
- CABINET WITH FULL 1" (25mm) NEOPRENE COATED INSULATION.
- STAINLESS STEEL CONDENSATE DRAIN PAN WITH 7/8" (22mm) COPPER FITTING.
- HIGH PERFORMANCE 2 ROW COMBINATION COOLING / HEATING COIL WITH MANUAL AIR VENT.
- TOE SPACE INLET WITH TOP OUTLET GRILLE.
- REMOVABLE FRONT PANEL FOR ACCESS TO ALL COMPONENTS.
- RESILIENT MOUNTED 3 SPEED PSC MOTORS 1050 RPM FOR QUIET OPERATION AND EFFICIENCY.
- SEVEN SIZES FROM 200 TO 1800 NOMINAL CFM (94 TO 850 l/s).



GENERAL INFORMATION, DIMENSIONS AND WEIGHTS									STANDARD STATIC MOTORS		HIGH STATIC MOTORS	
MODEL	NOMINAL CFM/L/S	NO. OF FANS	L	W	H	E	FILTER	WEIGHT LBS./KG.	MOTOR HP/WATTS	AMPS	MOTOR HP/WATTS	AMPS
VFC2	200 94	1	10 1/2 267	34 864	25 635	1/2 13	8 x 22 203 x 559	50 22.7	1/25 30	0.6	1/6 124	3.7
VFC3	300 142	1	10 1/2 267	39 991	25 635	1/2 13	8 x 27 203 x 686	58 26.4	1/25 30	0.6	1/6 124	3.7
VFC4	400 189	2	10 1/2 267	46 1168	25 635	1/2 13	8 x 34 203 x 864	75 34.1	1/20 37	1.2	1/6 124	3.7
VFC6	600 283	2	10 1/2 267	59 1499	25 635	1/2 13	8 x 47 8 x 1194	90 40.9	1/20 37	1.2	1/6 124	3.7
VFC8	800 378	2	13 330	59 1499	29 737	7/8 22	9 1/2 x 47 241 x 1194	105 47.7	1/10 75	1.7	1/4 186	3.3
VFC12	1200 566	2	14 1/2 368	59 1499	33 838	1 1/8 29	12 1/2 x 47 1/4 318 x 1200	125 56.8	1/4 186	4.8	1/2 373	9.4
VFC18	1800 850	2	16 406	63 1600	37 940	1 1/8 29	(2)13 1/2 x 25 1/2 (2)343 x 648	150 68.2	1/2 373	9.4	(2) 1/3 (2) 249	11.8

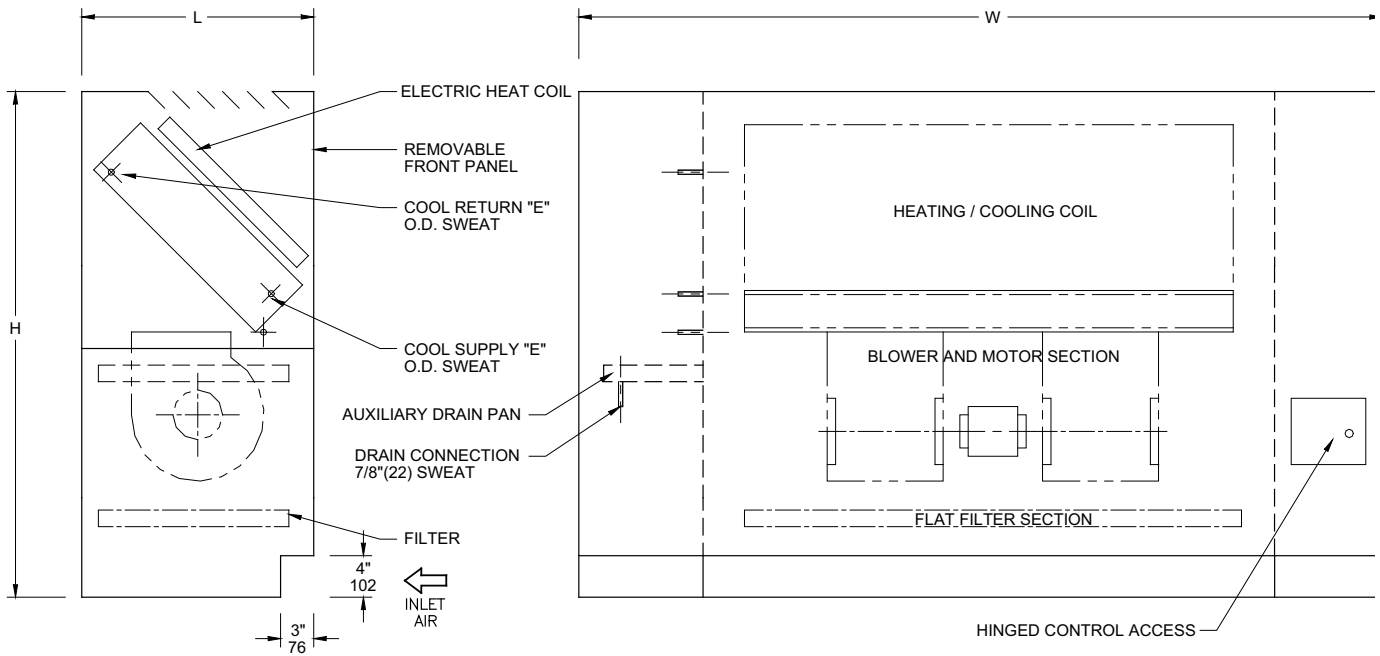
NOTES:

- UNIT SHOWN IS LEFT HAND CONFIGURATION. DIMENSIONS ARE IN INCHES AND MILLIMETERS.
- DIMENSIONS MAY CHANGE IF ADDITIONAL COIL ROWS ARE REQUIRED FOR EITHER COOLING OR HEATING APPLICATIONS.
- FILTER IS REMOVABLE FROM TOE SPACE.
- MAXIMUM 4 ROW COIL.

DUE TO CONTINUOUS DEVELOPMENT, DIMENSIONS AND CAPACITIES ARE SUBJECT TO CHANGE WITHOUT NOTICE.

STANDARD FEATURES:

- HEAVY 16 GA. (1.5mm) COLD ROLLED STEEL CONSTRUCTION.
- ELECTROSTATICALLY APPLIED POWDER COAT WHITE PRIMER FINISH.
- CABINET WITH FULL 1" (25mm) NEOPRENE COATED INSULATION.
- STAINLESS STEEL DRAIN PAN WITH 7/8" (22mm) COPPER FITTING.
- HIGH PERFORMANCE 2 ROW COOLING / HEATING COIL WITH MANUAL AIR VENT.
- TOE SPACE INLET WITH TOP OUTLET GRILLE.
- REMOVABLE FRONT PANEL FOR ACCESS TO ALL COMPONENTS.
- RESILIENT MOUNTED 3 SPEED PSC MOTORS 1050 RPM FOR QUIET OPERATION AND EFFICIENCY.
- SEVEN SIZES FROM 200 TO 1800 NOMINAL CFM (94 TO 850 l/s).



GENERAL INFORMATION, DIMENSIONS AND WEIGHTS									STANDARD STATIC MOTORS		HIGH STATIC MOTORS	
MODEL	NOMINAL CFM/L/S	NO. OF FANS	L	W	H	E	FILTERS	WEIGHT LBS./KG.	MOTOR HP/WATTS	AMPS	MOTOR HP/WATTS	AMPS
VFC2	200 94	1	10 1/2 267	42 1066	25 635	1/2 13	8 x 22 203 x 559	62 28	1/25 30	0.6	1/6 124	3.7
VFC3	300 142	1	10 1/2 267	47 1194	25 635	1/2 13	8 x 27 203 x 686	70 32	1/25 30	0.6	1/6 124	3.7
VFC4	400 189	2	10 1/2 267	54 1372	25 635	1/2 13	8 x 34 203 x 864	88 40	1/20 37	1.2	1/6 124	3.7
VFC6	600 283	2	10 1/2 267	67 1702	25 635	1/2 13	8 x 47 203 x 1194	102 46	1/20 37	1.2	1/6 124	3.7
VFC8	800 378	2	13 330	67 1702	29 737	7/8 22	9 1/2 x 47 241 x 1194	119 54	1/10 75	1.7	1/4 186	3.3
VFC12	1200 566	2	14 1/2 368	67 1702	33 838	1 1/8 29	12 1/2 x 47 1/4 318 x 1200	142 65	1/4 186	4.8	1/2 373	9.4
VFC18	1800 850	2	16 406	71 1803	37 940	1 1/8 29	(2)13 1/2 x 25 1/2 (2)343 x 648	170 77	1/2 373	9.4	(2) 1/3 (2) 249	11.8

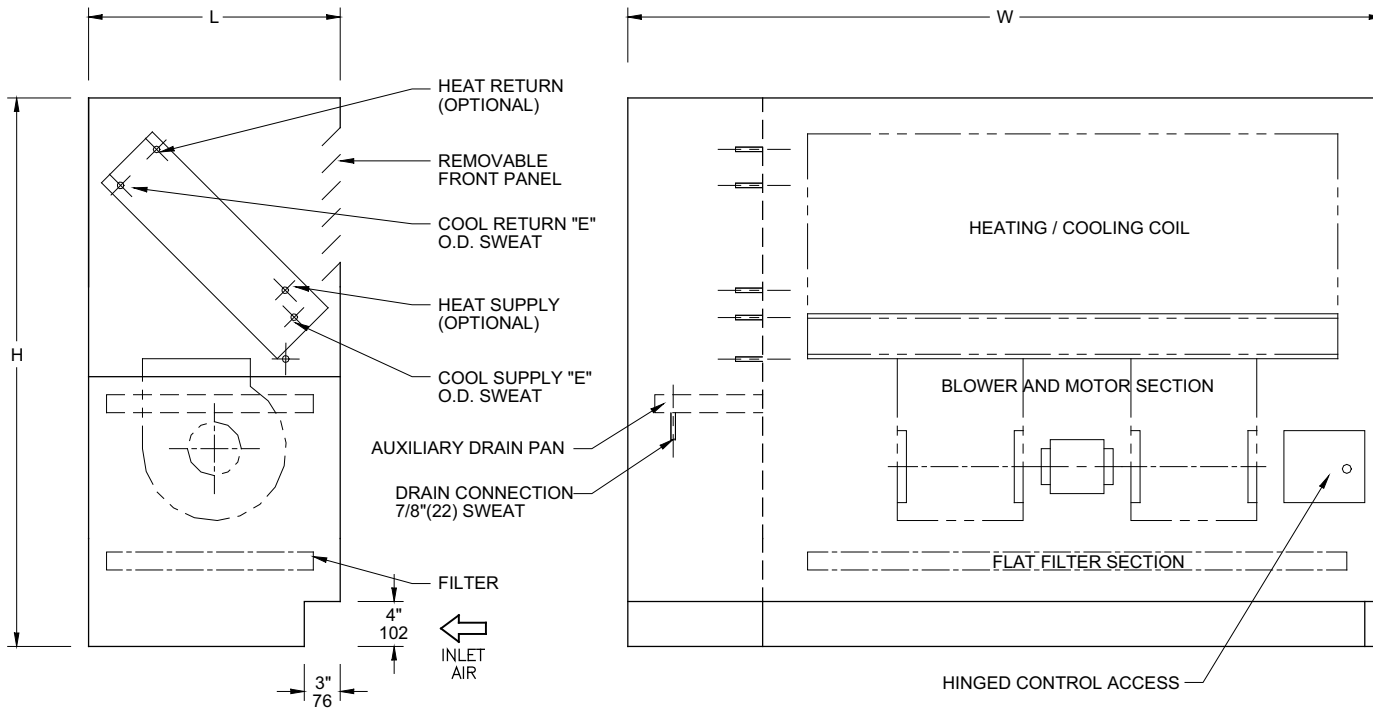
NOTES:

- UNIT SHOWN IS LEFT HAND CONFIGURATION. DIMENSIONS ARE IN INCHES AND MILLIMETERS.
- DIMENSIONS MAY CHANGE IF ADDITIONAL COIL ROWS ARE REQUIRED FOR EITHER COOLING OR HEATING APPLICATIONS.
- FILTER IS REMOVABLE FROM TOE SPACE.
- MAXIMUM 4 ROW COIL.

DUE TO CONTINUOUS DEVELOPMENT, DIMENSIONS AND CAPACITIES ARE SUBJECT TO CHANGE WITHOUT NOTICE.

STANDARD FEATURES:

- HEAVY 16 GA. (1.5mm) COLD ROLLED STEEL CONSTRUCTION.
- ELECTROSTATICALLY APPLIED POWDER COAT WHITE PRIMER FINISH.
- CABINET WITH FULL 1" (25mm) NEOPRENE COATED INSULATION.
- STAINLESS STEEL CONDENSATE DRAIN PAN WITH 7/8" (22mm) COPPER FITTING.
- HIGH PERFORMANCE 2 ROW COMBINATION COOLING / HEATING COIL WITH MANUAL AIR VENT.
- TOE SPACE INLET WITH FRONT OUTLET GRILLE.
- REMOVABLE FRONT PANEL FOR ACCESS TO ALL COMPONENTS.
- RESILIENT MOUNTED 3 SPEED PSC MOTORS 1050 RPM FOR QUIET OPERATION AND EFFICIENCY.
- SEVEN SIZES FROM 200 TO 1800 NOMINAL CFM (94 TO 850 l/s).



GENERAL INFORMATION, DIMENSIONS AND WEIGHTS									STANDARD STATIC MOTORS		HIGH STATIC MOTORS	
MODEL	NOMINAL CFM/L/S	NO. OF FANS	L	W	H	E	FILTER	WEIGHT LBS./KG.	MOTOR HP/WATTS	AMPS	MOTOR HP/WATTS	AMPS
VFC2	200 94	1	10 1/2 267	34 864	25 635	1/2 13	8 x 22 203 x 559	50 22.7	1/25 30	0.6	1/6 124	3.7
VFC3	300 142	1	10 1/2 267	39 991	25 635	1/2 13	8 x 27 203 x 686	58 26.4	1/25 30	0.6	1/6 124	3.7
VFC4	400 189	2	10 1/2 267	46 1168	25 635	1/2 13	8 x 34 203 x 864	75 34.1	1/20 37	1.2	1/6 124	3.7
VFC6	600 283	2	10 1/2 267	59 1499	25 635	1/2 13	8 x 47 8 x 1194	90 40.9	1/20 37	1.2	1/6 124	3.7
VFC8	800 378	2	13 330	59 1499	29 737	7/8 22	9 1/2 x 47 241 x 1194	105 47.7	1/10 75	1.7	1/4 186	3.3
VFC12	1200 566	2	14 1/2 368	59 1499	33 838	1 1/8 29	12 1/2 x 47 1/4 318 x 1200	125 56.8	1/4 186	4.8	1/2 373	9.4
VFC18	1800 850	2	16 406	63 1600	37 940	1 1/8 29	(2)13 1/2 x 25 1/2 (2)343 x 648	150 68.2	1/2 373	9.4	(2) 1/3 (2) 249	11.8

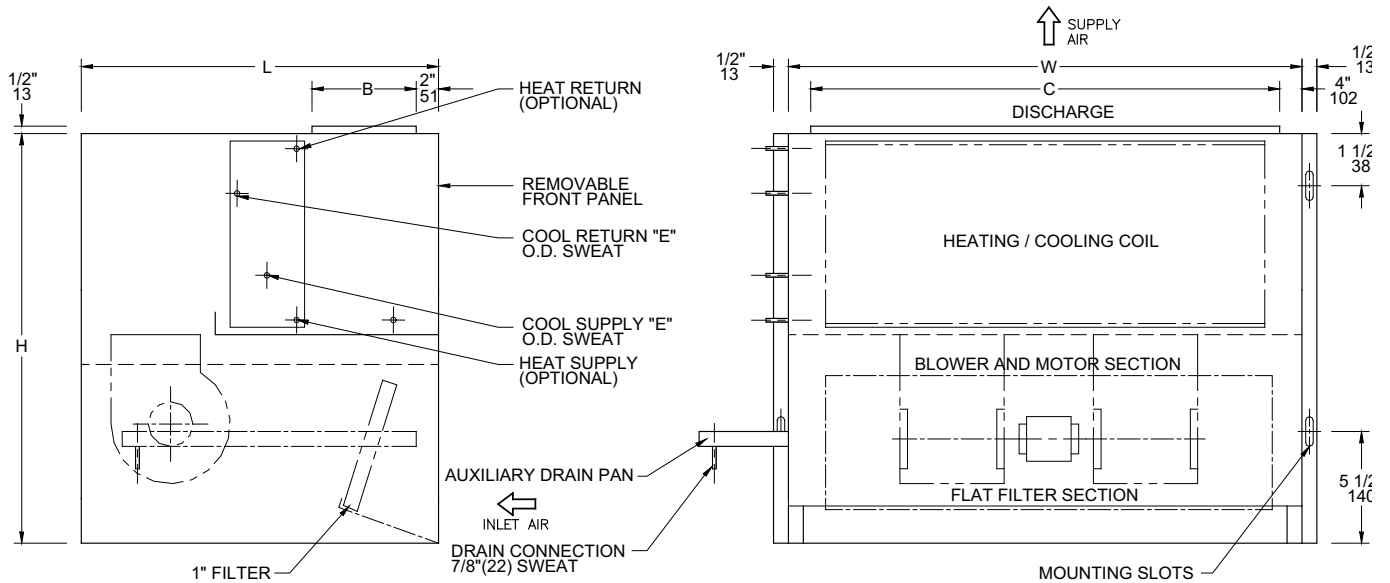
NOTES:

- UNIT SHOWN IS LEFT HAND CONFIGURATION. DIMENSIONS ARE IN INCHES AND MILLIMETERS.
- DIMENSIONS MAY CHANGE IF ADDITIONAL COIL ROWS ARE REQUIRED FOR EITHER COOLING OR HEATING APPLICATIONS.
- FILTER IS REMOVABLE FROM TOE SPACE.
- MAXIMUM 4 ROW COIL.

DUE TO CONTINUOUS DEVELOPMENT, DIMENSIONS AND CAPACITIES ARE SUBJECT TO CHANGE WITHOUT NOTICE.

STANDARD FEATURES:

- HEAVY 18 GA. (1.2mm) SATIN COAT STEEL CONSTRUCTION.
- CABINET WITH FULL 1" (25mm) NEOPRENE COATED INSULATION.
- STAINLESS STEEL DRAIN PAN WITH 7/8" (22mm) COPPER FITTING.
- HIGH PERFORMANCE 2 ROW COOLING / HEATING COIL WITH MANUAL AIR VENT.
- FRONT AIR INLET WITH DUCT COLLAR ON OUTLET.
- REMOVABLE FRONT PANEL FOR ACCESS TO ALL COMPONENTS.
- RESILIENT MOUNTED 3 SPEED PSC MOTORS 1050 RPM FOR QUIET OPERATION AND EFFICIENCY.
- SEVEN SIZES FROM 200 TO 1200 NOMINAL CFM (94 TO 566 l/s).



GENERAL INFORMATION, DIMENSIONS AND WEIGHTS											STANDARD STATIC MOTORS		HIGH STATIC MOTORS	
MODEL	NOMINAL CFM/L/S	NO. OF FANS	L	W	H	B	C	E	FILTER	WEIGHT LBS./KG.	MOTOR HP/WATTS	AMPS	MOTOR HP/WATTS	AMPS
LFC2	200	1	14	35	15 1/2	4	27	1/2	6 x 29	40	1/25	0.6	1/6	3.7
	94		356	889	394	102	686	13	152 x 737	18.2	30		124	
LFC3	300	1	14	42	15 1/2	4	34	1/2	6 x 36	47	1/25	0.6	1/6	3.7
	142		356	1067	394	102	864	13	152 x 914	21.4	30		124	
LFC4	400	2	14	53	15 1/2	4	45	1/2	6 x 47	58	1/20	1.2	1/6	3.7
	189		356	1346	394	102	1143	13	152 x 1194	26.4	37		124	
LFC6	600	2	14	50	18	6	42	1/2	6 x 44	70	1/20	1.2	1/6	3.7
	283		356	1270	457	152	1067	13	152 x 1118	21.8	37		124	
LFC8	800	2	17	65	19	6	56	7/8	7 x 59	80	1/10	1.7	1/4	3.3
	378		432	1651	483	152	1422	22	178 x 1499	36.4	75		186	
LFC12	1200	2	20	65	23	7	56	7/8	8 3/4 x 59	100	1/4	4.8	1/2	9.4
	566		508	1651	584	178	1422	22	222 x 1499	45.5	186		373	

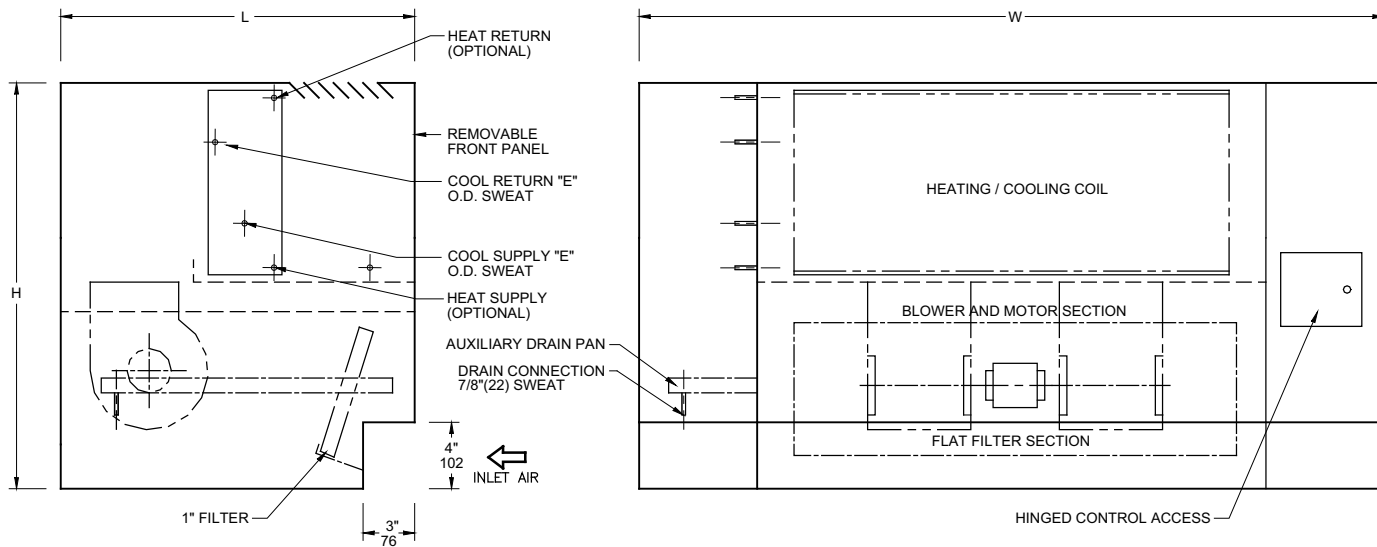
NOTES:

- UNIT SHOWN IS LEFT HAND CONFIGURATION. DIMENSIONS ARE IN INCHES AND MILLIMETERS.
- DIMENSIONS MAY CHANGE IF ADDITIONAL COIL ROWS ARE REQUIRED FOR EITHER COOLING OR HEATING APPLICATIONS.
- FILTER IS REMOVABLE FROM TOE SPACE
- MAXIMUM 4 ROW COIL.

DUE TO CONTINUOUS DEVELOPMENT, DIMENSIONS AND CAPACITIES ARE SUBJECT TO CHANGE WITHOUT NOTICE.

STANDARD FEATURES:

- HEAVY 16 GA. (1.5mm) COLD ROLLED STEEL CONSTRUCTION.
- ELECTROSTATICALLY APPLIED POWDER COAT WHITE PRIMER FINISH.
- CABINET WITH FULL 1" (25mm) NEOPRENE COATED INSULATION.
- STAINLESS STEEL DRAIN PAN WITH 7/8" (22mm) COPPER FITTING.
- HIGH PERFORMANCE 2 ROW COMBINATION COOLING / HEATING COIL WITH MANUAL AIR VENT.
- TOE SPACE INLET WITH TOP OUTLET GRILLE.
- REMOVABLE FRONT PANEL FOR ACCESS TO ALL COMPONENTS.
- RESILIENT MOUNTED 3 SPEED PSC MOTORS 1050 RPM FOR QUIET OPERATION AND EFFICIENCY.
- SEVEN SIZES FROM 200 TO 1200 NOMINAL CFM (94 TO 566 l/s).

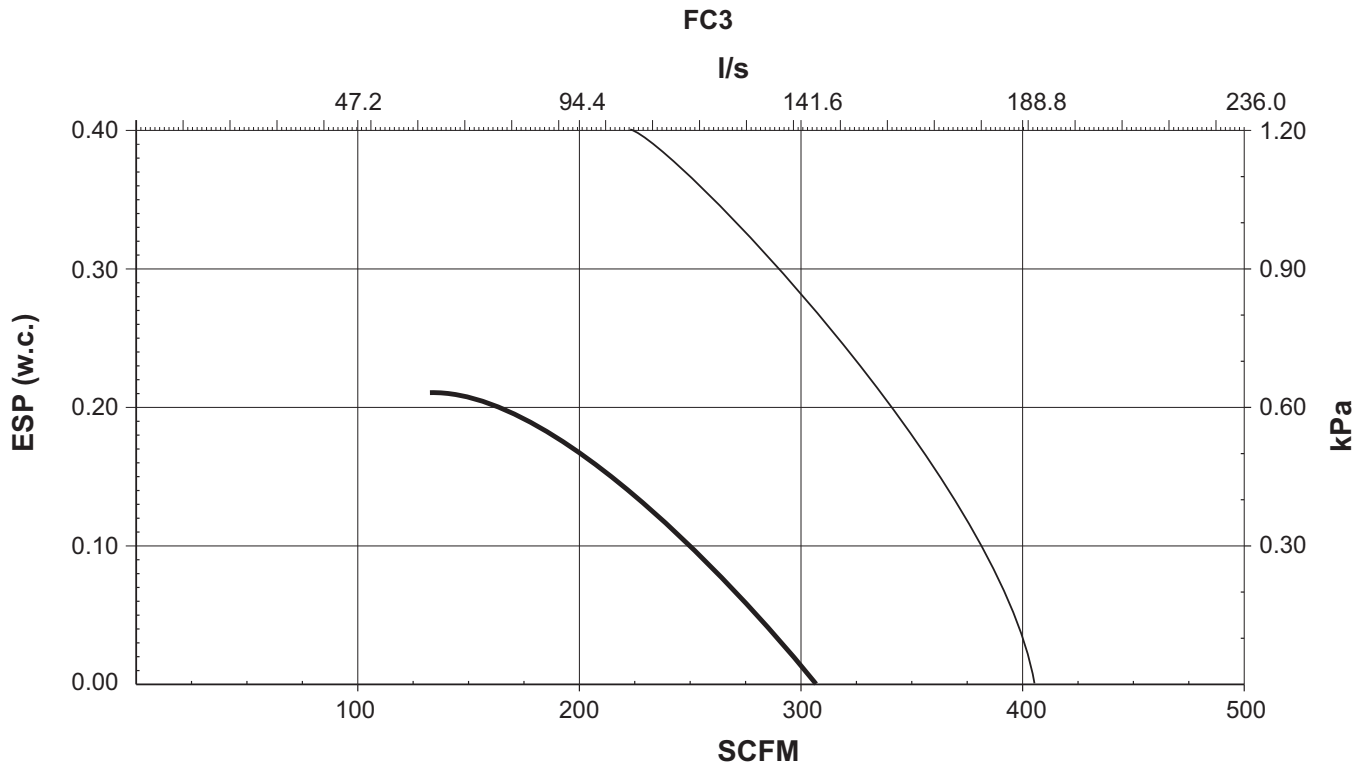
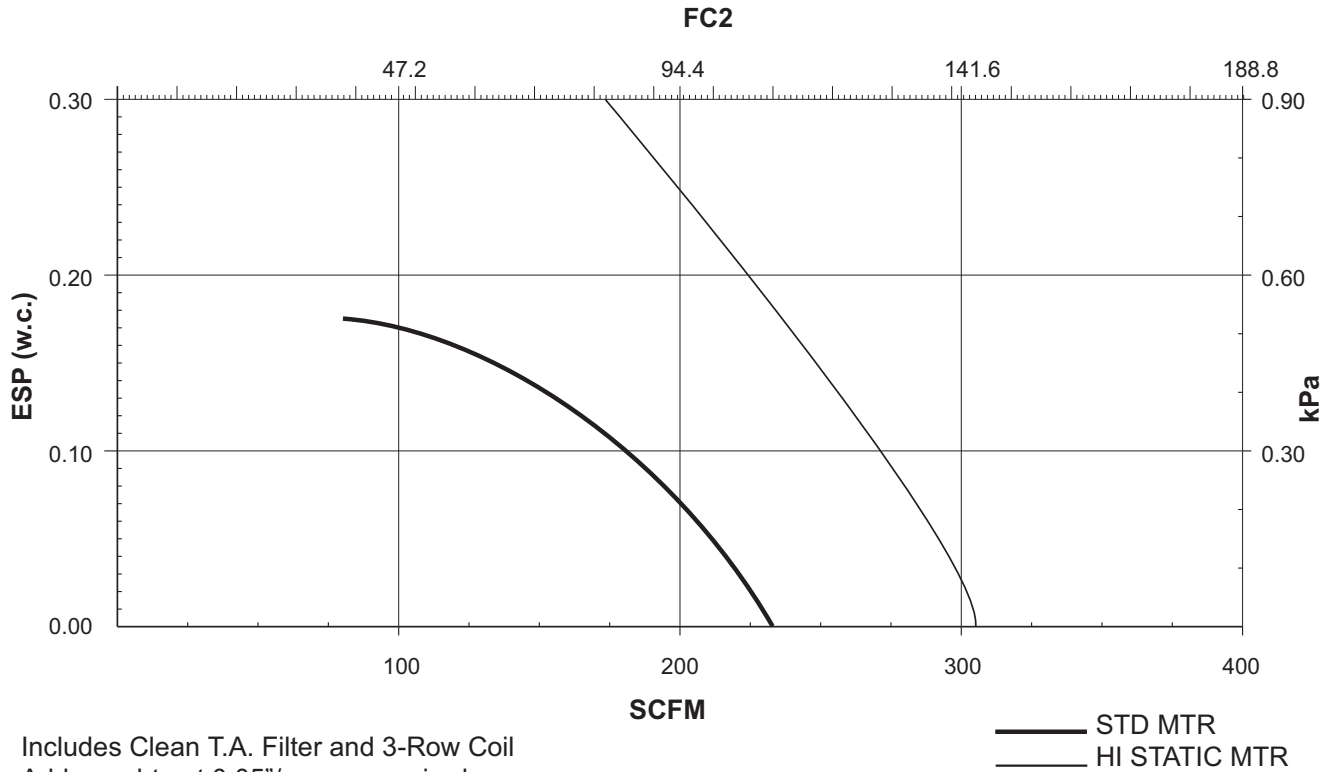


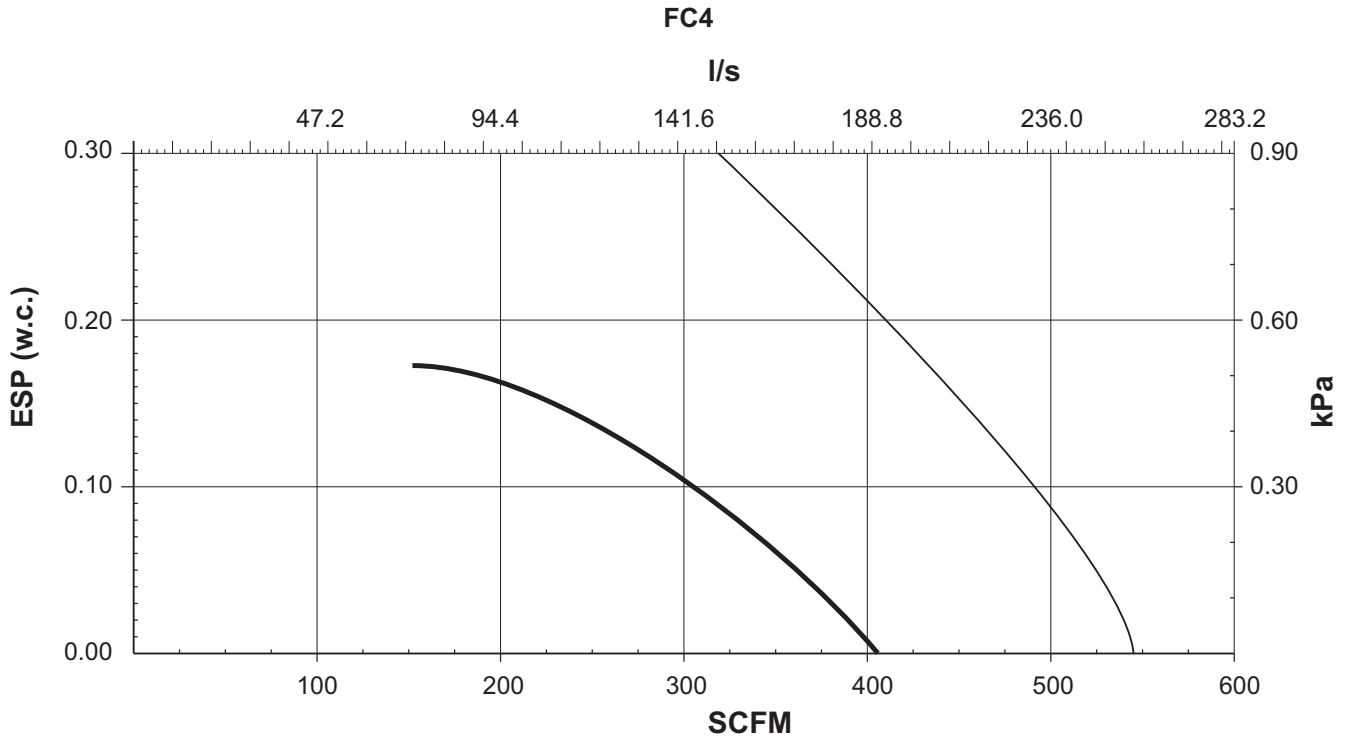
GENERAL INFORMATION, DIMENSIONS AND WEIGHTS									STANDARD STATIC MOTORS		HIGH STATIC MOTORS	
MODEL	NOMINAL CFM/L/S	NO. OF FANS	L	W	H	E	FILTERS	WEIGHT LBS./KG.	MOTOR HP/WATTS	AMPS	MOTOR HP/WATTS	AMPS
LFC2	200 94	1	14 356	51 1295	15 1/2 394	1/2 13	6 x 29 x 1 152 x 737 x 25	48 21.8	1/25 29.8	0.6	1/6 124	3.7
LFC3	300 142	1	14 356	58 1473	15 1/2 394	1/2 13	6 x 36 x 1 152 x 914 x 25	58 26.4	1/25 29.8	0.6	1/6 124	3.7
LFC4	400 189	2	14 356	69 1753	15 1/2 394	1/2 13	6 x 47 x 1 152 x 1194 x 25	72 32.7	1/20 37.3	1.2	1/6 124	3.7
LFC6	600 283	2	14 356	66 1676	18 457	1/2 13	6 x 44 x 1 152 x 1118 x 25	87 39.5	1/20 37.3	1.2	1/6 124	3.7
LFC8	800 378	2	17 432	81 2057	19 483	7/8 22	7 x 59 x 1 178 x 1499 x 25	100 45.5	1/10 74.6	1.7	1/4 186	3.3
LFC12	1200 566	2	20 508	81 2057	23 584	7/8 22	8 3/4 x 59 x 1 222 x 1499 x 25	120 54.5	1/4 186	4.8	1/2 373	9.4

NOTES:

- UNIT SHOWN IS LEFT HAND CONFIGURATION. DIMENSIONS ARE IN INCHES AND MILLIMETERS.
- DIMENSIONS MAY CHANGE IF ADDITIONAL COIL ROWS ARE REQUIRED FOR EITHER COOLING OR HEATING APPLICATIONS.
- FILTER IS REMOVABLE FROM TOE SPACE.
- MAXIMUM 4 ROW COIL.

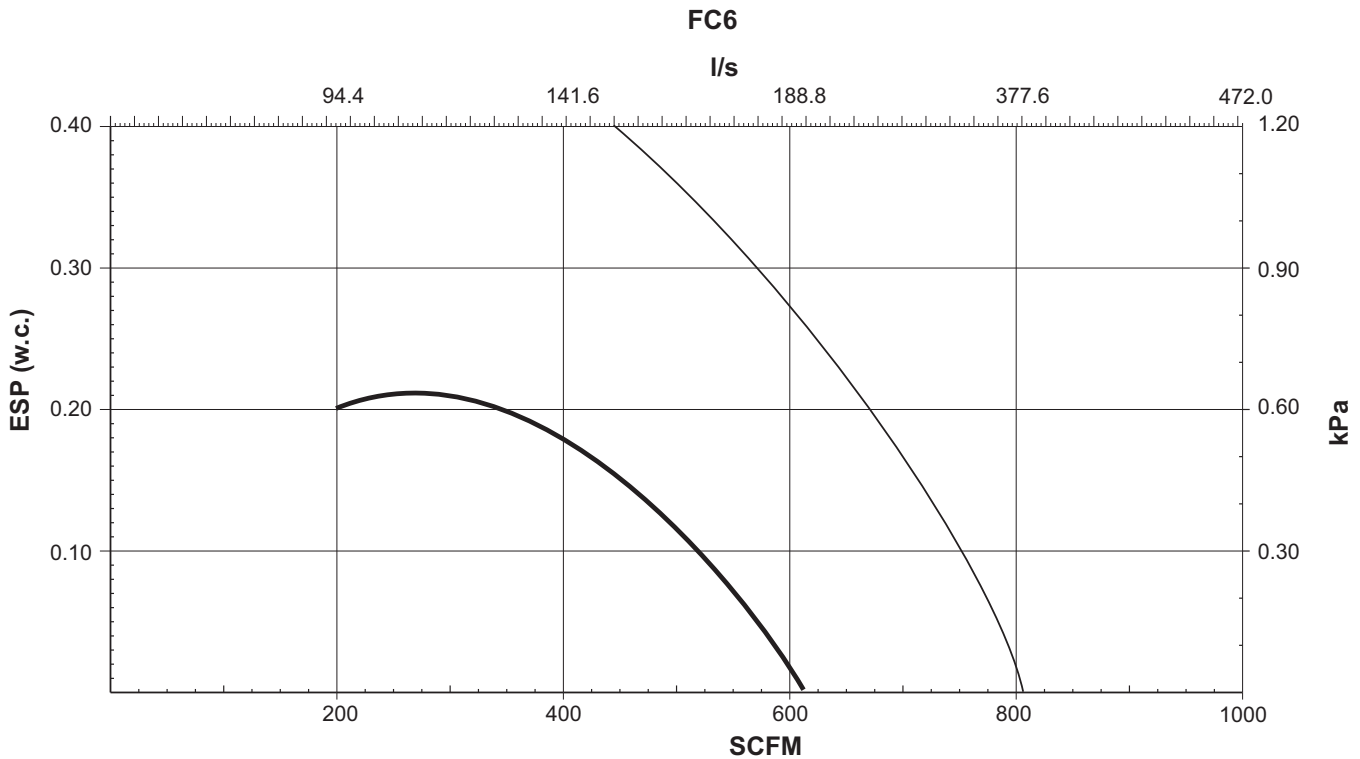
DUE TO CONTINUOUS DEVELOPMENT, DIMENSIONS AND CAPACITIES ARE SUBJECT TO CHANGE WITHOUT NOTICE.





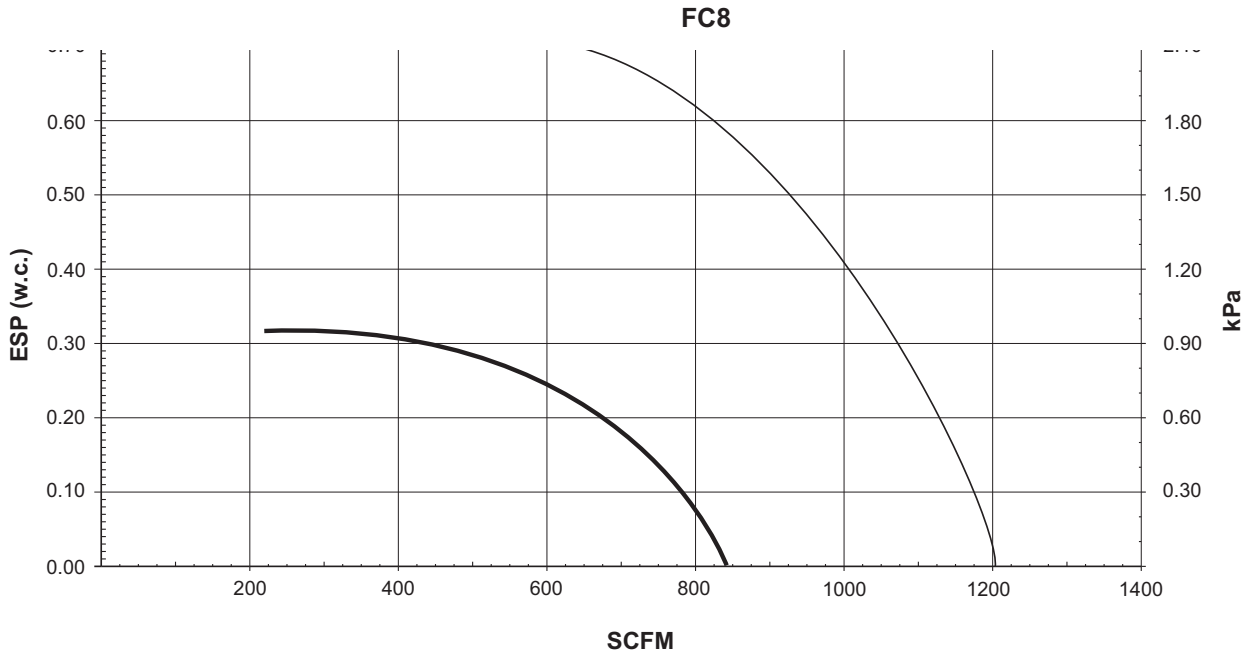
Includes Clean T.A. Filter and 3-Row Coil
 Add or subtract 0.05"/row as required.
 Add or deduct 0.02"/row if wet.

— STD MTR
 — HI STATIC MTR



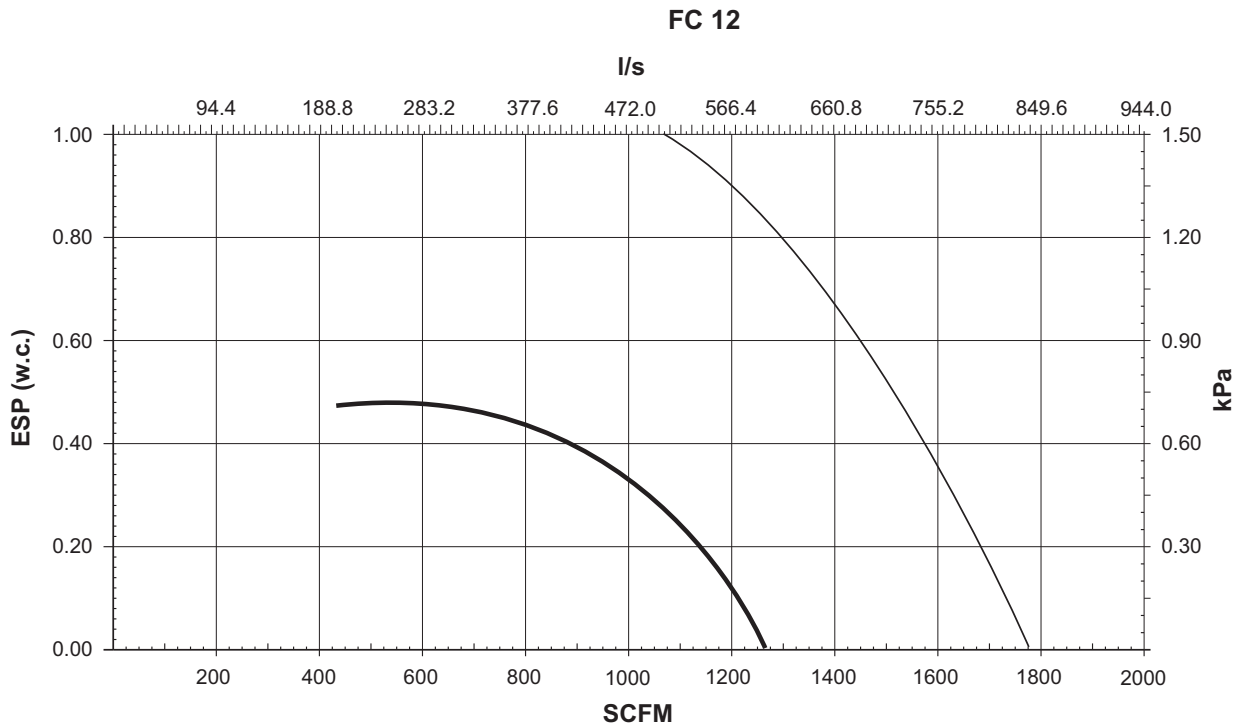
Includes Clean T.A. Filter and 3-Row Coil
 Add or subtract 0.05"/row as required.
 Add or deduct 0.02"/row if wet.

— STD MTR
 — HI STATIC MTR



Includes Clean T.A. Filter and 3-Row Coil
 Add or subtract 0.05"/row as required.
 Add or deduct 0.02"/row if wet.

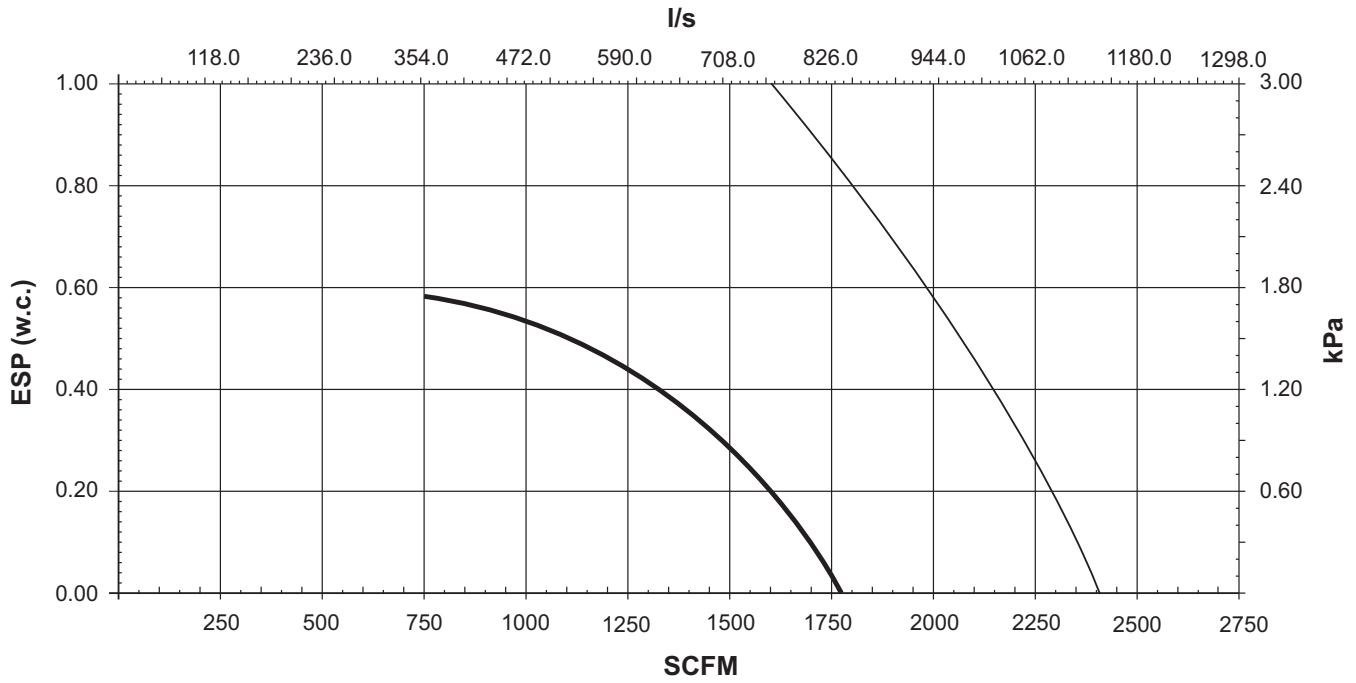
— STD MTR
 — HI STATIC MTR



Includes Clean T.A. Filter and 3-Row Coil
 Add or subtract 0.05"/row as required.
 Add or deduct 0.02"/row if wet.

— STD MTR
 — HI STATIC MTR

FC18



Includes Clean T.A. Filter and 3-Row Coil
 Add or subtract 0.05"/row as required.
 Add or deduct 0.02"/row if wet.

— STD MTR
 — HI STATIC MTR

DIRECT DRIVE COIL SIZES (IMPERIAL / METRIC)					
MODEL	H x W	MODEL	H x W	MODEL	H x W
HFC2	8 3/4 x 18 222 x 457	VFC2	7 1/2 x 18 191 x 457	LFC2	4 1/2 x 27 114 x 686
HFC3	8 3/4 x 23 222 x 584	VFC3	7 1/2 x 23 191 x 584	LFC3	4 1/2 x 34 114 x 864
HFC4	8 3/4 x 30 222 x 762	VFC4	7 1/2 x 30 191 x 762	LFC4	4 1/2 x 45 114 x 1143
HFC6	8 3/4 x 42 222 x 1067	VFC6	7 1/2 x 42 191 x 1067	LFC6	7 1/2 x 42 191 x 1067
HFC8	11 1/4 x 42 286 x 1067	VFC8	10 x 42 254 x 1067	LFC8	7 1/2 x 57 191 x 1448
HFC12	13 3/4 x 42 349 x 1067	VFC12	12 1/2 x 42 318 x 1067	LFC12	10 x 57 254 x 1448
HFC18	16 1/4 x 46 413 x 1168	VFC18	15 x 46 381 x 1168	—	—

ALL COILS ARE 12 FINS PER INCH.

1 ROW HEATING COIL CAPACITY TABLE FOR FAN COIL UNITS (PERFORMANCE IN MBH)										
MODEL	USGPM									
	0.5	1.0	1.5	2.0	3.0	4.0	5.0	6.0	7.0	8.0
FC2	9.5	11.3	12.0	12.4	12.8	13.1	—	—	—	—
FC3	12.3	15.2	16.5	17.2	17.9	18.3	—	—	—	—
FC4	15.0	19.3	21.2	22.1	23.4	24.0	—	—	—	—
FC6	18.8	25.9	29.2	31.0	33.2	34.2	—	—	—	—
FC8	21.7	31.7	36.7	39.7	42.9	44.8	—	—	—	—
FC12	—	31.4	37.9	41.9	46.8	49.4	51.4	52.7	53.9	54.3
FC18	—	42.1	53.8	61.7	71.7	77.8	81.4	84.4	86.9	88.1

PERFORMANCE AT NOMINAL CFM. EAT @ 60°F AND EWT @ 180°F

1 ROW HEATING COIL CAPACITY TABLE FOR FAN COIL UNITS (PERFORMANCE IN kw)										
MODEL	l/s									
	0.032	0.063	0.095	0.126	0.189	0.252	0.315	0.378	0.441	0.504
FC2	2.8	3.3	3.5	3.6	3.8	3.8	—	—	—	—
FC3	3.6	4.5	4.8	5.0	5.2	5.4	—	—	—	—
FC4	4.4	5.7	6.2	6.5	6.9	7.0	—	—	—	—
FC6	5.5	7.6	8.6	9.1	9.7	10.0	—	—	—	—
FC8	6.4	9.3	10.8	11.6	12.6	13.1	—	—	—	—
FC12	—	9.2	11.1	12.3	13.8	14.5	15.1	15.4	15.8	15.9
FC18	—	12.3	15.8	18.1	21.0	22.8	23.9	24.7	25.5	25.8

PERFORMANCE AT NOMINAL CFM. EAT @ 15.6°C AND EWT @ 82.2°C

DUE TO CONTINUOUS PRODUCT DEVELOPMENT, DIMENSIONS AND CAPACITIES ARE SUBJECT TO CHANGE WITHOUT NOTICE.

COOLING CAPACITY TABLE FOR FAN COIL UNITS (IMPERIAL)														
WATER TEMP RISE °F	MODEL	NOMINAL CFM	40°F ENTERING WATER TEMP.				45°F ENTERING WATER TEMP.				50°F ENTERING WATER TEMP.			
			MBH TOTAL	MBH SENS	GPM	P.D. FT. W.C.	MBH TOTAL	MBH SENS	GPM	P.D. FT. W.C.	MBH TOTAL	MBH SENS	GPM	P.D. FT. W.C.
			8	FC2	200	6.8	4.6	1.60	2.74	4.8	3.7	1.20	1.74	3.4
FC3	300	10.6		6.9	2.65	6.96	8.2	6.0	2.04	4.49	5.8	5.0	1.44	2.62
FC4	400	14.8		9.8	3.70	3.20	11.5	8.1	2.85	9.26	8.2	6.9	2.04	5.25
FC6	600	23.5		15.1	5.90	8.00	18.1	12.9	4.50	5.13	10.6	8.9	2.70	8.65
FC8	800	33.8		21.7	8.40	7.54	26.2	18.4	6.50	5.07	18.8	15.6	4.70	3.04
FC12	1200	40.5		27.8	10.1	3.60	32.4	23.6	8.10	7.00	22.6	19.2	5.60	9.39
FC18	1800	60.0		40.5	15.0	5.69	50.6	36.7	12.6	10.10	36.3	31.3	9.10	5.79
10	FC2	200	5.5	4.0	1.1	1.57	4.1	3.5	0.77	0.95	—	—	—	—
	FC3	300	9.5	6.5	1.9	3.21	7.0	5.5	1.40	2.54	4.6	4.6	0.92	1.46
	FC4	400	13.6	9.0	2.70	8.55	10.2	7.6	2.04	5.31	7.2	6.5	1.44	3.05
	FC6	600	21.4	14.7	4.25	4.73	16.0	12.1	3.20	3.21	11.5	9.9	2.30	8.11
	FC8	800	31.0	20.3	6.10	4.63	23.2	16.9	4.60	6.83	16.0	14.6	3.20	1.89
	FC12	1200	38.1	25.9	7.60	6.60	28.4	21.4	5.70	9.78	24.9	21.3	5.00	9.49
	FC18	1800	59.7	40.3	11.90	9.25	44.9	34.5	9.00	5.74	34.5	30.6	6.90	7.47
12	FC2	200	4.3	3.5	0.72	0.89	—	—	—	—	—	—	—	—
	FC3	300	8.3	6.0	1.38	2.51	6.0	5.1	0.99	1.60	4.0	4.0	0.67	0.91
	FC4	400	12.3	8.4	2.04	5.37	9.0	7.2	1.50	3.27	5.9	5.9	0.99	1.81
	FC6	600	19.0	13.3	3.15	3.07	14.5	11.0	2.40	8.81	10.3	9.5	1.70	4.92
	FC8	800	28.0	18.8	4.60	6.90	20.7	16.0	3.40	4.29	12.7	12.7	2.10	1.03
	FC12	1200	34.2	23.7	5.70	9.89	31.3	23.7	5.20	10.26	20.4	20.4	3.40	5.11
	FC18	1800	53.6	37.8	8.90	5.70	43.2	33.8	7.20	8.11	28.8	27.0	4.80	9.46

2 ROW, 12 FPI COOLING COIL . EAT 80 / 67°F

COOLING CAPACITY TABLE FOR FAN COIL UNITS (METRIC)														
WATER TEMP RISE °C	MODEL	NOMINAL L /s	4.4°C ENTERING WATER TEMP.				7.2°C ENTERING WATER TEMP.				10.0°C ENTERING WATER TEMP.			
			kW TOTAL	kW SENS	l/s	P.D. kPa	kW TOTAL	kW SENS	l/s	P.D. kPa	kW TOTAL	kW SENS	l/s	P.D. kPa
			4.4	FC2	94.4	2.0	1.3	0.10	8.19	1.4	1.1	0.08	5.20	1.0
FC3	141.6	3.1		2.0	0.17	20.80	2.4	1.8	0.13	13.42	1.7	1.5	0.09	7.83
FC4	188.8	4.3		2.9	0.23	9.57	3.4	2.4	0.18	27.68	2.4	2.0	0.13	15.69
FC6	283.2	6.9		4.4	0.37	23.91	5.3	3.8	0.28	15.33	3.1	2.6	0.17	25.86
FC8	377.6	9.9		6.4	0.53	22.54	7.7	5.4	0.41	15.15	5.5	4.6	0.30	9.09
FC12	566.4	11.9		8.2	0.64	10.76	9.5	6.9	0.51	20.92	6.6	5.6	0.35	28.07
FC18	849.6	17.6		11.9	0.95	17.01	14.8	10.8	0.79	30.19	10.6	9.2	0.57	17.31
5.6	FC2	94.4	1.6	1.2	0.07	4.69	1.2	1.0	2.84	2.75	—	—	—	—
	FC3	141.6	2.8	1.9	0.12	9.60	2.1	1.6	0.09	7.59	1.4	1.4	0.06	4.36
	FC4	188.8	4.0	2.6	0.17	25.56	3.0	2.2	0.13	15.87	2.1	1.9	0.09	9.12
	FC6	283.2	6.3	4.3	0.27	14.14	4.7	3.5	0.20	9.60	3.4	2.9	0.15	24.24
	FC8	377.6	9.1	6.0	0.38	13.84	6.8	5.0	0.29	20.42	4.7	4.3	0.20	5.65
	FC12	566.4	11.2	7.6	0.48	19.73	8.3	6.3	0.36	29.23	7.3	6.2	0.32	28.37
	FC18	849.6	17.5	11.8	0.75	27.65	13.2	10.1	0.57	17.16	10.1	9.0	0.44	22.33
6.7	FC2	94.4	1.3	1.0	0.05	2.66	—	—	—	—	—	—	—	—
	FC3	141.6	2.4	1.8	0.09	7.50	1.8	1.5	0.06	4.78	1.2	1.2	0.04	2.72
	FC4	188.8	3.6	2.5	0.13	16.05	2.6	2.1	0.10	9.77	1.7	1.7	0.06	5.41
	FC6	283.2	5.6	4.0	0.20	9.18	4.3	3.2	0.15	26.33	3.0	2.8	0.11	14.71
	FC8	377.6	8.2	5.5	0.29	20.62	6.1	4.7	0.21	12.82	3.7	3.7	0.13	3.08
	FC12	566.4	10.0	6.9	0.36	29.56	9.2	6.9	0.33	30.67	6.0	6.0	0.21	15.27
	FC18	849.6	15.7	11.1	0.56	17.04	12.7	9.9	0.45	24.24	8.4	7.9	0.30	28.28

2 ROW, 12 FPI COOLING COIL. EAT 26.7 / 19.4 °C

MODELS: HFC, VFC AND LFC

CABINETS: Concealed units shall be fabricated with heavy 18 gauge (1.2mm) satin coat galvanized steel. Exposed units shall be 16 gauge (1.5mm) cold rolled steel and be treated to a multi-step preparation process before the application of an electrostatically applied, baked white powder coat primer. Cabinets shall be lined with 1" (25mm) neoprene coated insulation. Condensate pans shall be stainless steel and be insulated with closed cell insulation for sweat proof operation and corrosion resistance. All units shall come complete with a 1" synthetic disposable filter, as well as being equipped with an electrical junction box.

COILS: Heating and cooling coils shall be manufactured by Engineered Air and consist of aluminum fins mechanically bonded to 1/2" (13mm) copper tubes. Fins shall be rippled for maximum heat transfer and coil casings shall be galvanized steel. Coils shall be factory tested with air at 300 psig (2070 kPa) while immersed in an illuminated water tank.

FANS: Double width, double inlet, forward curved centrifugal fans constructed of galvanized steel shall be provided. Fans shall be balanced for quiet, vibration free operation and be supplied with housing specifically designed for efficient airflow.

MOTORS: All motors shall be open type, resiliently mounted, incorporating sleeve bearings and internal overload protection. Motors shall be permanent split capacitor type. All motors shall be equipped for 115/1/60 and be capable of at least three speeds.

APPROVAL: All units shall be safety tested to conform to UL Standard 1995 and CSA.2 No. 236. Units shall be CSA approved and bear the _cCSA_{US} label.

Units shall be Engineered Air series HFC (horizontal blow thru), VFC (vertical blow thru), or LFC (lowboy blow thru) with model, sizes, capacities, motor types, H.P. (kW), and power characteristics as indicated on drawings and/or schedules.

